

**ergo.slide**

– ergonomic quick adjustment of individual components

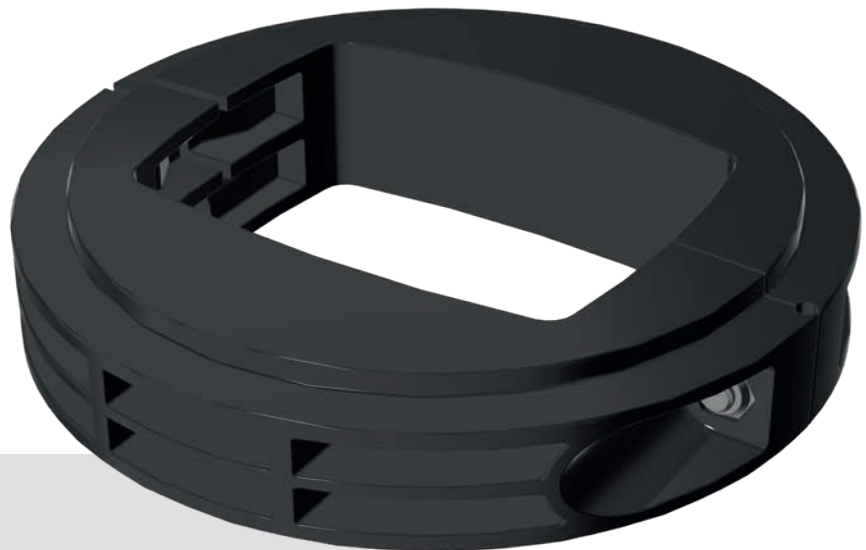
# ergo.slide

Height adjustment of individual components – within seconds

Spontaneous and intuitive – the **ergo.slide** height adjustment makes changing the working posture a natural part of everyday working life. The easier, faster and more comfortable an adjustment is, the more frequently it is used. A simple and uncomplicated height adjustment of individual working components, such as the keyboard, is possible in a matter of seconds with the **ergo.slide** from BERNSTEIN. It meets all requirements of independent height adjustments of individual components of a control station – for example to different body postures and sizes and subjective requirements.

**An accessory for suspension systems:**

**CS-3000 — CS-480 B.flex — CS-3000**

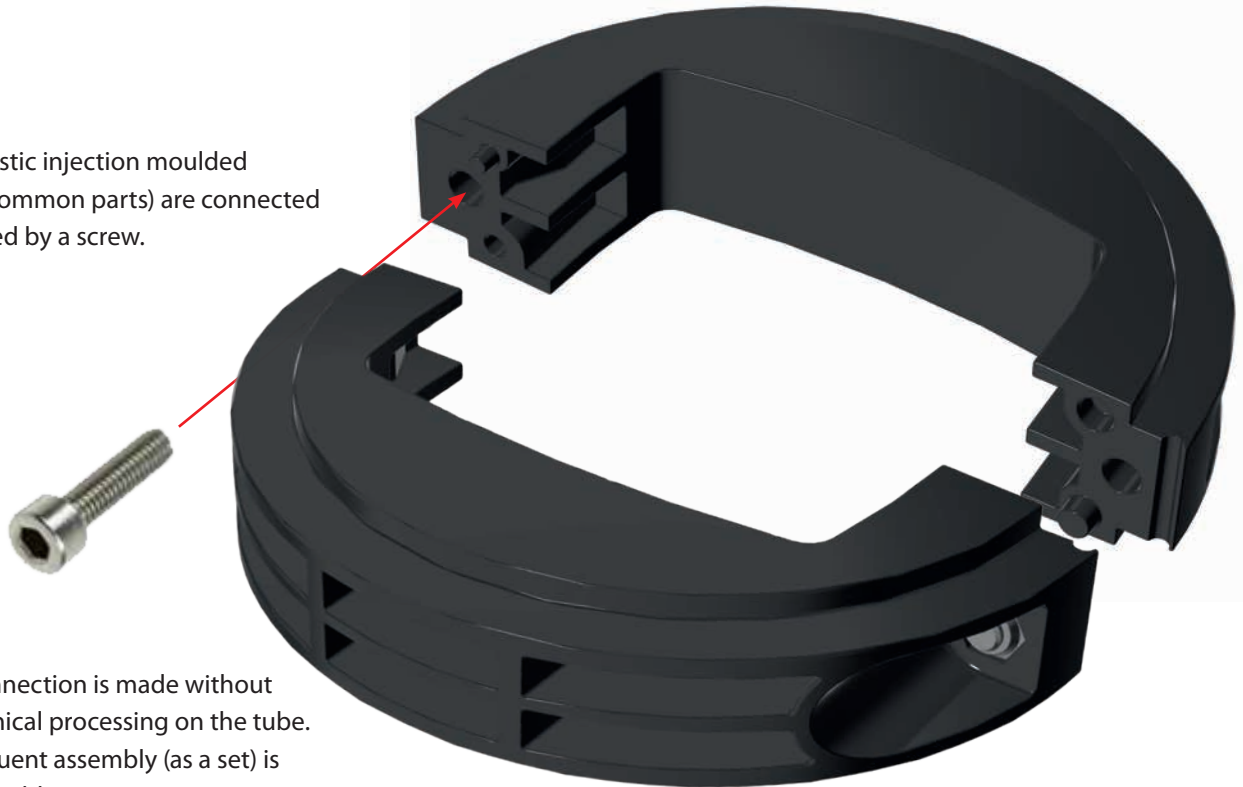


## Technical data

- Maximum load: 25 kg
- Maximum number of height adjustments: 3500
- Easy adjustment by loosening the adjusting screw
- Safe and secure addition of system components
- Leaves no marks when gliding on the tube
- The storage components are held in a fixed position, but rotatable
- Can be used with a suspension system and a free standing column

## How does the ergo.slide work?

Two plastic injection moulded parts (common parts) are connected and fixed by a screw.

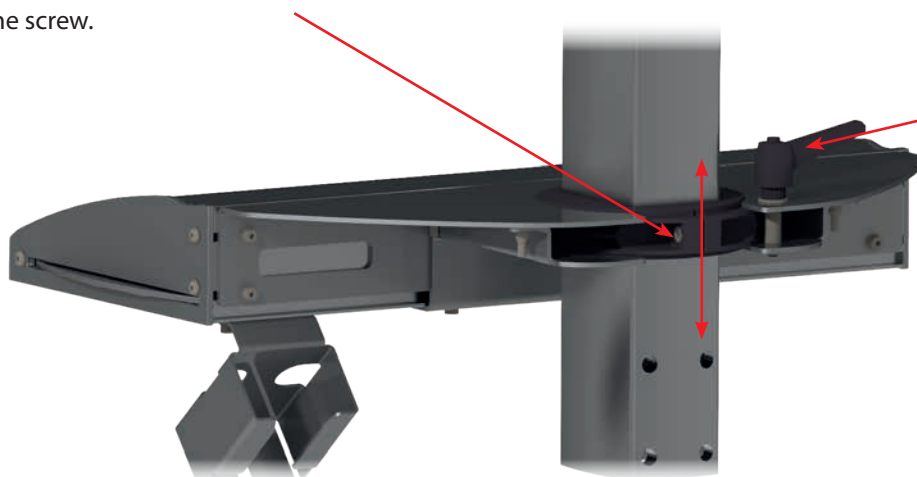


The connection is made without mechanical processing on the tube. Subsequent assembly (as a set) is also possible.

Rigid control elements and uniform workplaces, which demand forced and unnatural work postures, are a relic of past times in industry – thanks to modern health and safety laws.

## Adjustment

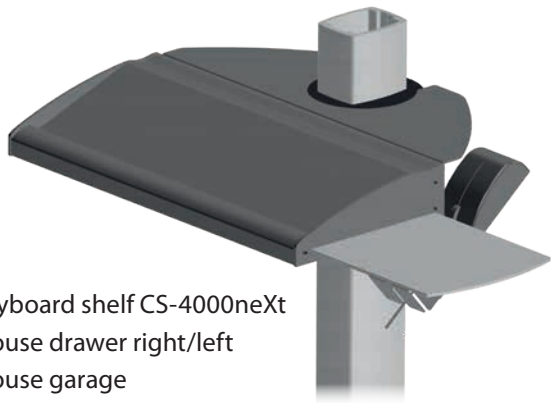
The height of the **ergo.slide** can be adjusted by loosening the screw.



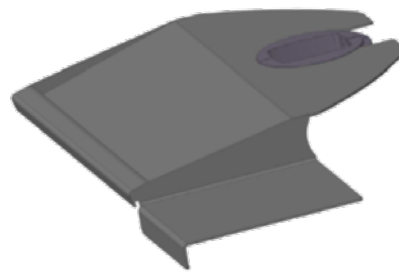
A rotation of the keyboard shelf is also possible after loosening the clamping levers.

# Applications

Simple connection incl. height adjustment of keyboard shelves

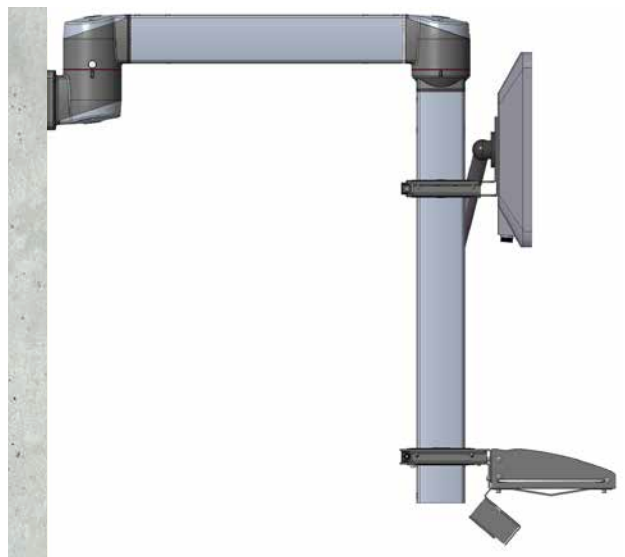
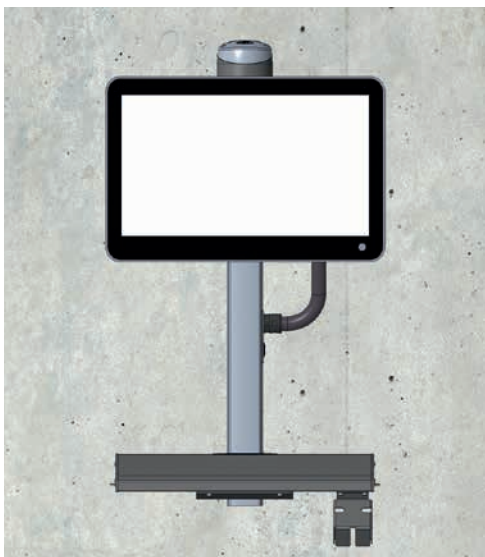


- Keyboard shelf CS-4000neXt
- Mouse drawer right/left
- Mouse garage



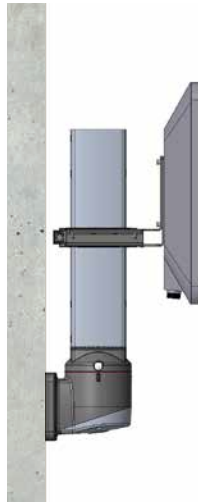
- Simple sheet metal keyboardshelf
- Incl. fixed mouse tray

Wall connection



- Wall joint W rotatable CS-3000
- Elbow rotatable CS-3000
- CS-3000 tube incl. cover
- IPC Holder with **ergo•slide**
- **ergo•slide** Keyboard shelf

## Wall connection



- Wall joint S CS-3000
- Tube CS-3000
- Incl. cover for tube covering
- IPC Holder with **ergo.slide**

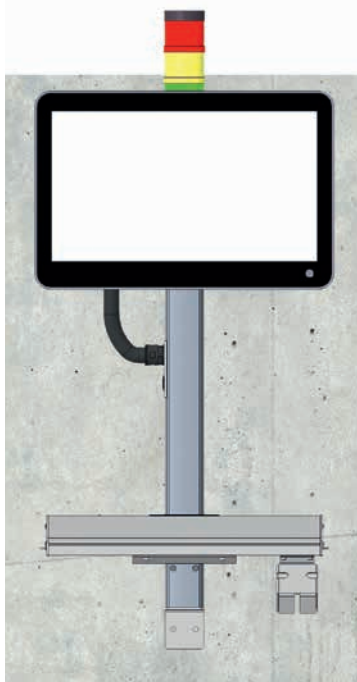
## Base cabinet connection



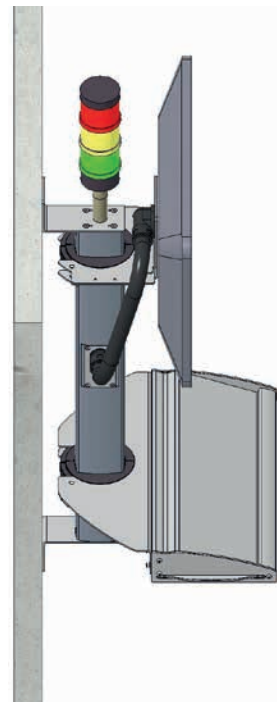
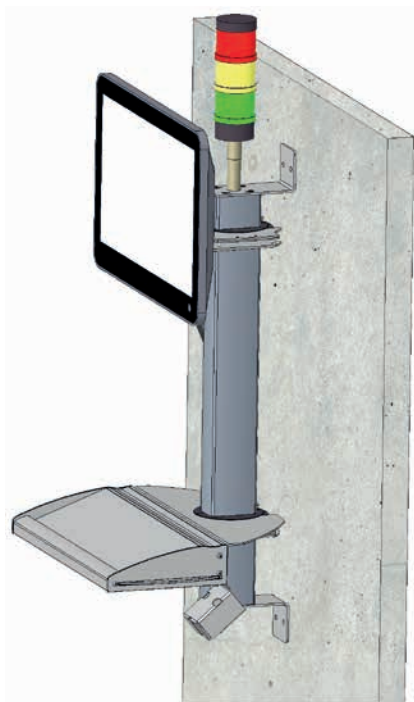
- Fixed base CS-3000
- CS-3000 tube
- Incl. cover for tube covering
- IPC-Holder with **ergo.slide**

# Applications

## Machine connection



- Tube CS-3000
- Clamping elbow for mounting on the machine
- IPC Holder with **ergo.slide**
- **ergo.slide** keyboard shelf





## Article

## Figure (data in mm)

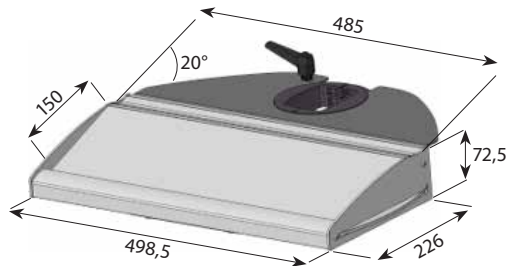
### ergo.slide CS-3000

#### Keyboard shelf with mousepad right/left

9806000109

#### Keyboard shelf CS-4000 neXt

- Material: powdered steel
- Weight: 8,23 kg
- Colour: RAL 9006 (standard)
- Mousepad right and left extendable
- Keyboard support surface: 485 x 150 mm (width x depth)



### ergo.slide CS-3000

- Material: polyamide
- Weight: 0,235 kg
- Colour: black

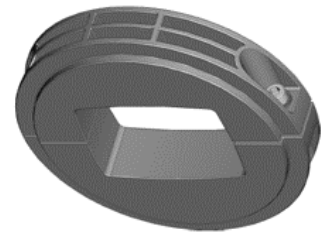
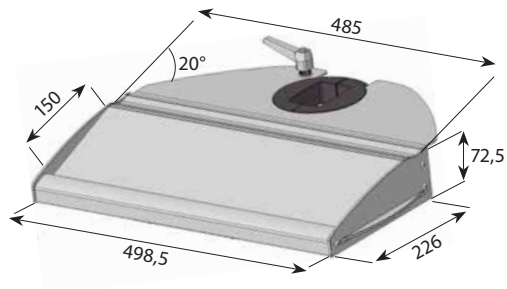
### ergo.slide CS-3000neXt

#### Keyboard shelf with mousepad right/left

9806000110

#### Keyboard shelf CS-4000 neXt

- Material: powdered steel
- Weight: 8,23 kg
- Colour: RAL 9006 (standard)
- Mousepad right and left extendable
- Keyboard support surface: 485 x 150 mm (width x depth)



### ergo.slide CS-3000 neXt

- Material: polyamide
- Weight: 0,295 kg
- Colour: black

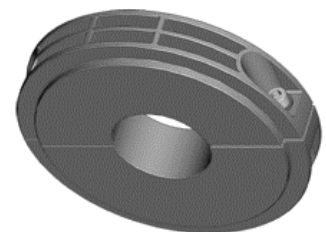
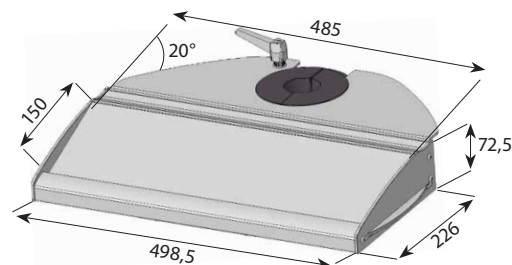
### ergo.slide CS-480 B.flex

#### Keyboard shelf with mousepad right/left

9806000111

#### Keyboard shelf CS-4000 neXt

- Material: powdered steel
- Weight: 8,23 kg
- Colour: RAL 9006 (standard)
- Mousepad right and left extendable
- Keyboard support surface: 485 x 150 mm (width x depth)



### ergo.slide CS-480 B.flex

- Material: polyamide
- Weight: 0,35 kg
- Colour: black

# Ordering data

Article

Figure (data in mm)

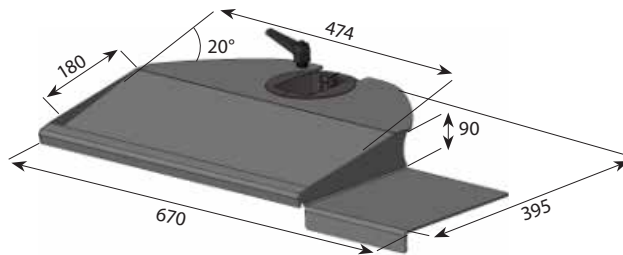
## **ergo.slide CS-3000**

### **Keyboard shelf with mousepad right**

**9806000112**

#### **Sheet metal keyboard shelf**

- Material: powdered steel
- Weight: 6,575 kg
- Colour: RAL 9006 (standard)
- Mousepad fixed
- Keyboard support surface: 474 x 180 mm (width x depth)



## **ergo.slide CS-3000**

- Material: polyamide
- Weight: 0,235 kg
- Colour: black

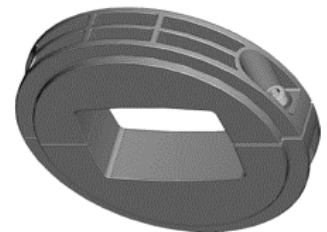
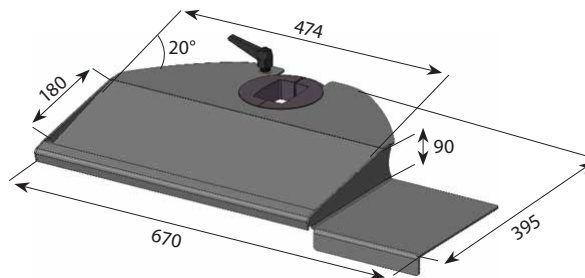
## **ergo.slide CS-3000next**

### **Keyboard shelf with mousepad right**

**9806000113**

#### **Sheet metal keyboard shelf**

- Material: powdered steel
- Weight: 6,575 kg
- Colour: RAL 9006 (standard)
- Mousepad fixed
- Keyboard support surface: 474 x 180 mm (width x depth)



## **ergo.slide CS-3000 neXt**

- Material: polyamide
- Weight: 0,295 kg
- Colour: black

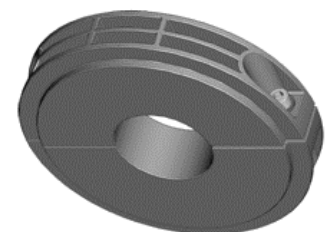
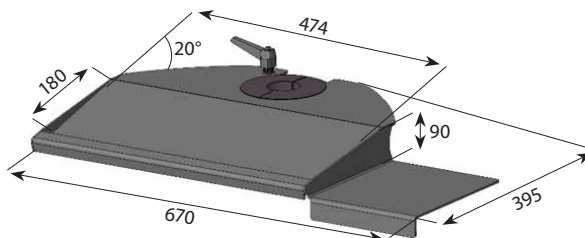
## **ergo.slide CS-480 B.flex**

### **Keyboard shelf with mousepad right**

**9806000114**

#### **Sheet metal keyboard shelf**

- Material: powdered steel
- Weight: 6,575 kg
- Colour: RAL 9006 (standard)
- Mousepad fixed
- Keyboard support surface: 474 x 180 mm (width x depth)



## **ergo.slide CS-480 B.flex**

- Material: polyamide
- Weight: 0,35 kg
- Colour: black

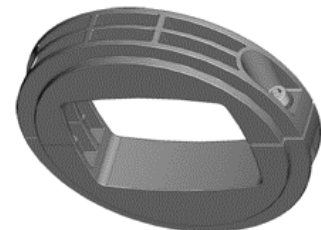
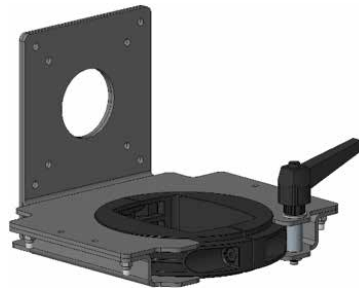


**Article**
**Figure**
**ergo.slide CS-3000**
**VESA**
**9806000138**
**VESA (75/100)**

- Central passage Ø50
- Material: powdered steel
- Weight: 1,69 kg
- Colour: RAL 9006 (standard)

**ergo.slide CS-3000**

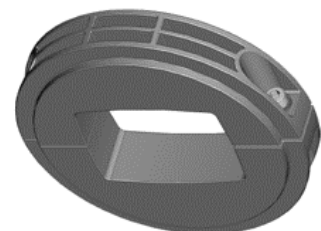
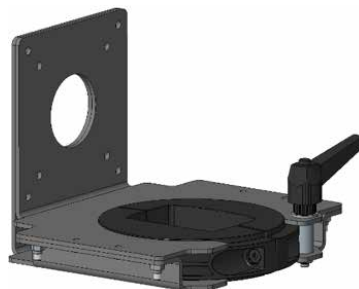
- Material: polyamide
- Weight: 0,235 kg
- Colour: black


**ergo.slide CS-3000neXt**
**VESA**
**9806000139**
**VESA (75/100)**

- Central passage Ø50
- Material: powdered steel
- Weight: 1,69 kg
- Colour: RAL 9006 (standard)

**ergo.slide CS-3000 neXt**

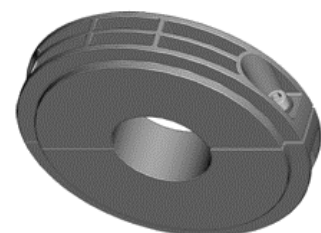
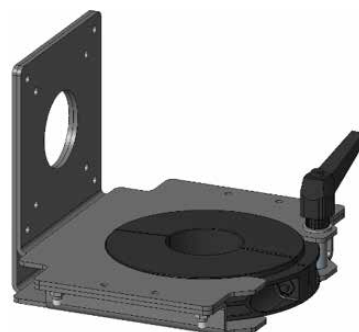
- Material: polyamide
- Weight: 0,295 kg
- Colour: black


**ergo.slide CS-480 B.flex**
**VESA**
**9806000140**
**VESA (75/100)**

- Central passage Ø50
- Material: powdered steel
- Weight: 1,69 kg
- Colour: RAL 9006 (standard)

**ergo.slide CS-480 B.flex**

- Material: polyamide
- Weight: 0,35 kg
- Colour: black

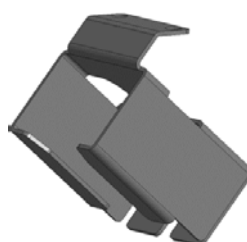


## Accessories

**Mouse garage**
**9806000141**






- Material: powdered steel
- Weight: 0,293 kg
- Colour: RAL 9006 (standard)
- For mice with max. 68 x 43 mm (width x depth)

Note: The mouse garage can be mounted on all current keyboard shelf variants.



# Ordering data

## Accessories

Article	Figure
<b>End cap for support tube CS-3000</b> <b>9806000147</b> <ul style="list-style-type: none"> <li>Material: aluminium</li> <li>Weight: 0,115 kg</li> <li>Colour: RAL 9006 (standard)</li> </ul>	
<b>End cap for support tube CS-3000neXt</b> <b>9806000148</b> <ul style="list-style-type: none"> <li>Material: aluminium</li> <li>Weight: 0,083 kg</li> <li>Colour: RAL 9006 (standard)</li> </ul>	
<b>End cap for support tube CS-480 B.flex</b> <b>9806000149</b> <ul style="list-style-type: none"> <li>Material: aluminium</li> <li>Weight: 0,043 kg</li> <li>Colour: RAL 9006 (standard)</li> </ul>	
<b>Wall mounting set for support tube CS-3000</b> <b>9806000150</b> <ul style="list-style-type: none"> <li>Material: steel</li> <li>Weight: 1,277 kg</li> <li>Colour: RAL 9006 (standard)</li> </ul>	
<b>Wall mounting set for support tube CS-3000neXt</b> <b>9806000151</b> <ul style="list-style-type: none"> <li>Material: steel</li> <li>Weight: 1,025 kg</li> <li>Colour: RAL 9006 (standard)</li> </ul>	
<b>Wall mounting set for support tube CS-480 B.flex</b> <b>9806000152</b> <ul style="list-style-type: none"> <li>Material: steel</li> <li>Weight: 1,267 kg</li> <li>Colour: RAL 9006 (standard)</li> </ul>	
<b>Handle screw</b> <b>9806000184</b> <ul style="list-style-type: none"> <li>Material: galvanised steel and plastic PA6</li> <li>Weight: 0,120 kg</li> <li>Colour of handle: black</li> </ul> <p>Note: Replacement of the screw for clamping the ergo.slide. This enables tool-free operation.</p>	

Notes

Plans. Sketches. Ideas.



A large grid of small dots for sketching or writing.

**DETECT****We make  
safety happen.****PROTECT****We keep safe  
your visions.**

## Contact

**International Headquarters**  
**BERNSTEIN AG**  
Hans-Bernstein-Str. 1  
32457 Porta Westfalica  
Phone +49 571 793-0  
Fax +49 571 793-555  
info@bernstein.eu  
www.bernstein.eu

**Denmark**  
**BERNSTEIN A/S**  
Phone +45 7020 0522  
Fax +45 7020 0177  
info.denmark@bernstein.eu

**France**  
**BERNSTEIN S.A.R.L.**  
Phone +33 1 64 66 32 50  
Fax +33 1 64 66 10 02  
info.france@bernstein.eu

**Italy**  
**BERNSTEIN S.r.l.**  
Phone +39 035 4549037  
Fax +39 035 4549647  
info@it.bernstein.eu

**United Kingdom**  
**BERNSTEIN Ltd**  
Phone +44 1922 744999  
Fax +44 1922 457555  
sales@bernstein-ltd.co.uk

**Austria**  
**BERNSTEIN GmbH**  
Phone +43 2256 62070-0  
Fax +43 2256 62618  
office@bernstein.at

**Switzerland**  
**BERNSTEIN (Schweiz) AG**  
Phone +41 44 775 71-71  
Fax +41 44 775 71-72  
info.schweiz@bernstein.eu

**Hungary**  
**BERNSTEIN Kft.**  
Phone +36 1 4342295  
Fax +36 1 4342299  
info@hu.bernstein.eu

**China**  
**BERNSTEIN Safe Solutions**  
**(Taicang) Co., Ltd.**  
Phone +86 512 81608180  
Fax +86 512 81608181  
info@bernstein-safesolutions.cn

**www.bernstein.eu**