

ergo.slide

– ergonomic quick adjustment of individual components

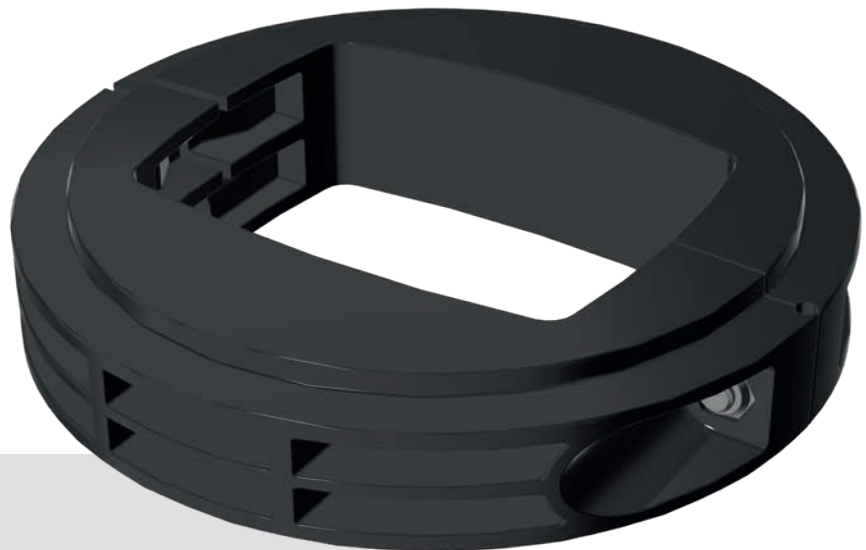
ergo.slide

Height adjustment of individual components – within seconds

Spontaneous and intuitive – the **ergo.slide** height adjustment makes changing the working posture a natural part of everyday working life. The easier, faster and more comfortable an adjustment is, the more frequently it is used. A simple and uncomplicated height adjustment of individual working components, such as the keyboard, is possible in a matter of seconds with the **ergo.slide** from BERNSTEIN. It meets all requirements of independent height adjustments of individual components of a control station – for example to different body postures and sizes and subjective requirements.

An accessory for suspension systems:

CS-3000 — CS-480 B.flex — CS-3000

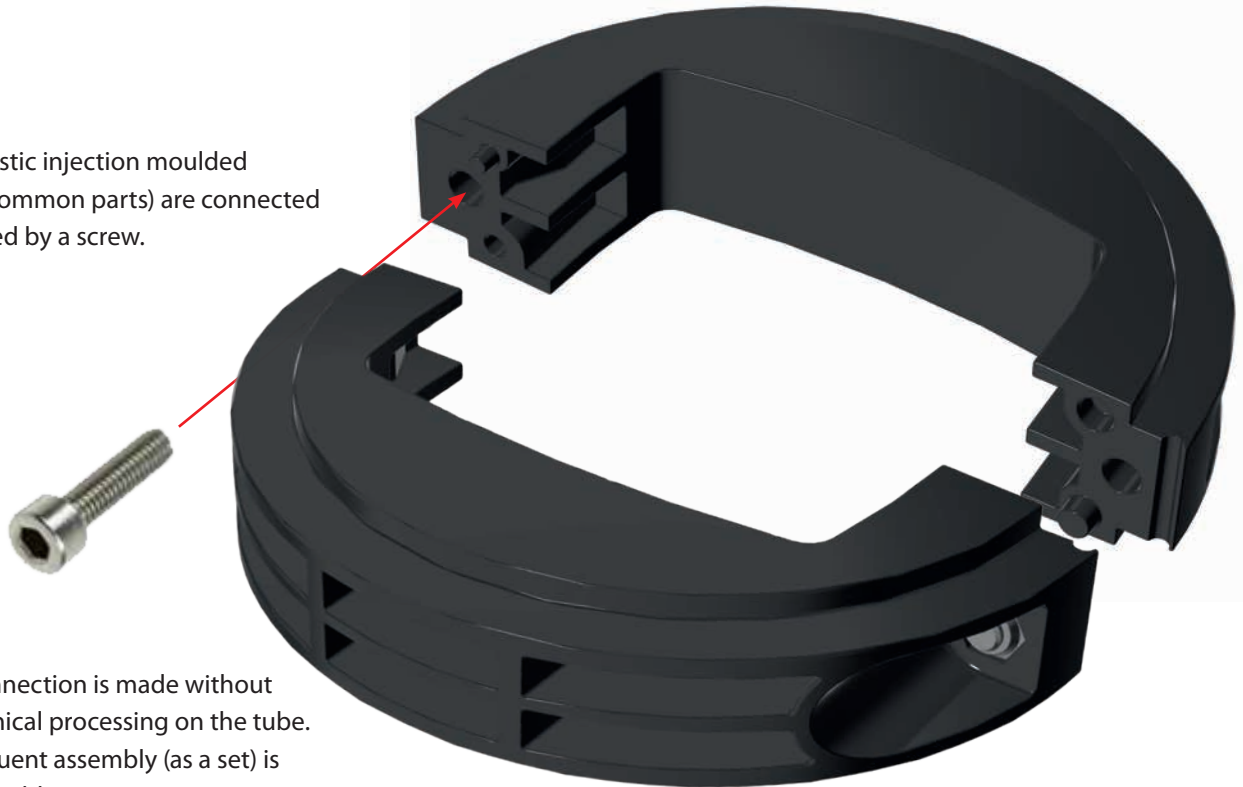


Technical data

- Maximum load: 25 kg
- Maximum number of height adjustments: 3500
- Easy adjustment by loosening the adjusting screw
- Safe and secure addition of system components
- Leaves no marks when gliding on the tube
- The storage components are held in a fixed position, but rotatable
- Can be used with a suspension system and a free standing column

How does the ergo.slide work?

Two plastic injection moulded parts (common parts) are connected and fixed by a screw.

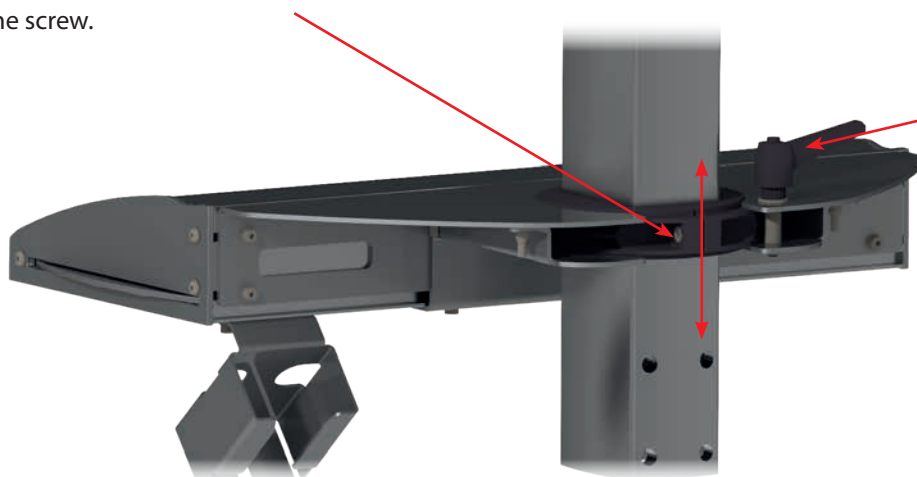


The connection is made without mechanical processing on the tube. Subsequent assembly (as a set) is also possible.

Rigid control elements and uniform workplaces, which demand forced and unnatural work postures, are a relic of past times in industry – thanks to modern health and safety laws.

Adjustment

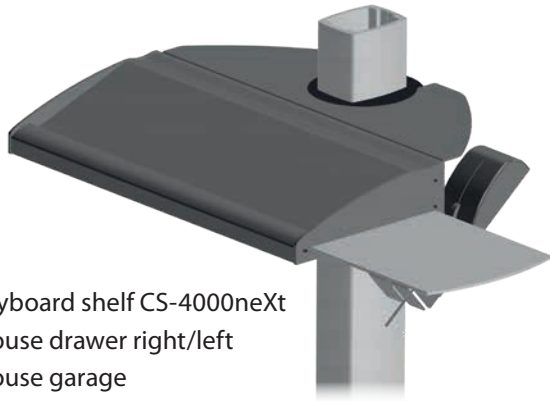
The height of the **ergo.slide** can be adjusted by loosening the screw.



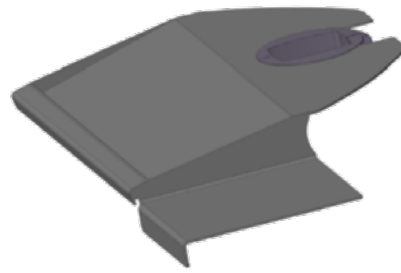
A rotation of the keyboard shelf is also possible after loosening the clamping levers.

Applications

Simple connection incl. height adjustment of keyboard shelves

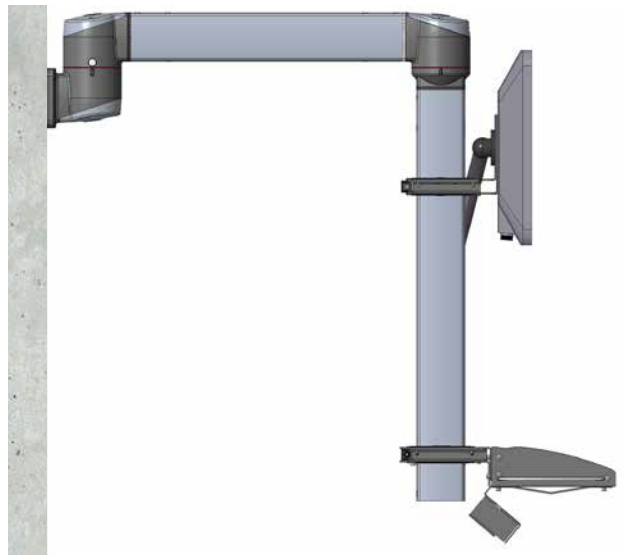
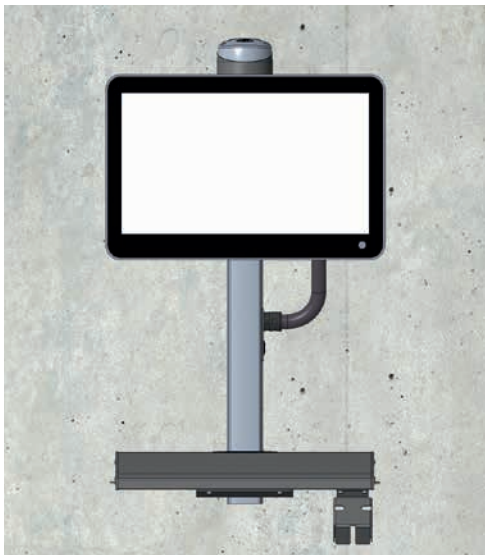


- Keyboard shelf CS-4000neXt
- Mouse drawer right/left
- Mouse garage



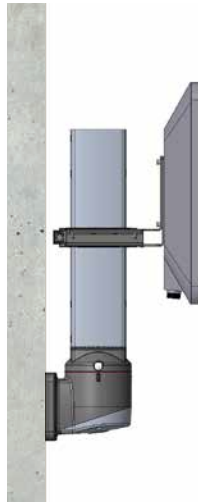
- Simple sheet metal keyboardshelf
- Incl. fixed mouse tray

Wall connection



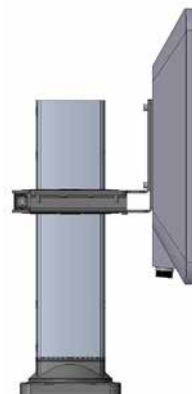
- Wall joint W rotatable CS-3000
- Elbow rotatable CS-3000
- CS-3000 tube incl. cover
- IPC Holder with **ergo•slide**
- **ergo•slide** Keyboard shelf

Wall connection



- Wall joint S CS-3000
- Tube CS-3000
- Incl. cover for tube covering
- IPC Holder with **ergo.slide**

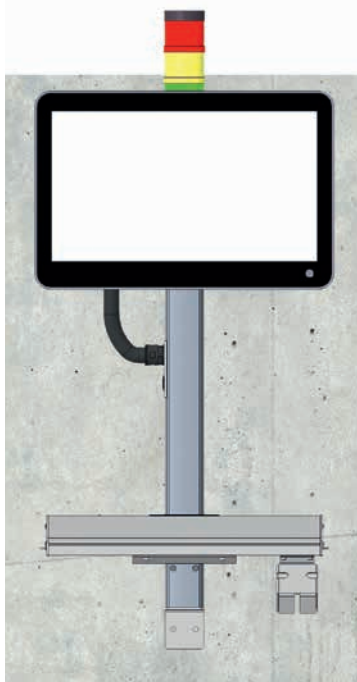
Base cabinet connection



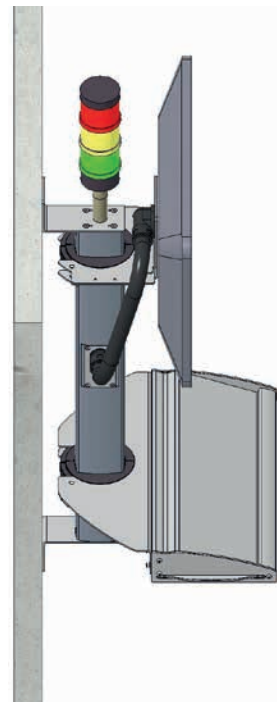
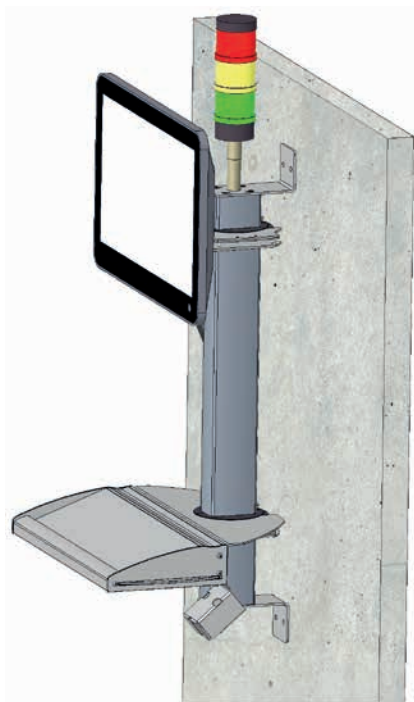
- Fixed base CS-3000
- CS-3000 tube
- Incl. cover for tube covering
- IPC-Holder with **ergo.slide**

Applications

Machine connection



- Tube CS-3000
- Clamping elbow for mounting on the machine
- IPC Holder with **ergo.slide**
- **ergo.slide** keyboard shelf



Article

Figure (data in mm)

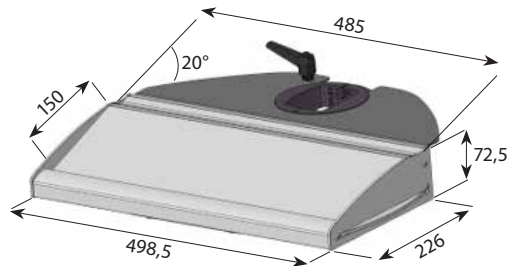
ergo.slide CS-3000

Keyboard shelf with mousepad right/left

9806000109

Keyboard shelf CS-4000 neXt

- Material: powdered steel
- Weight: 8,23 kg
- Colour: RAL 9006 (standard)
- Mousepad right and left extendable
- Keyboard support surface: 485 x 150 mm (width x depth)



ergo.slide CS-3000

- Material: polyamide
- Weight: 0,235 kg
- Colour: black

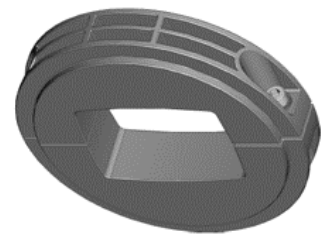
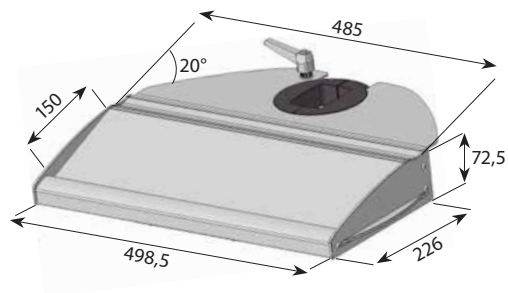
ergo.slide CS-3000neXt

Keyboard shelf with mousepad right/left

9806000110

Keyboard shelf CS-4000 neXt

- Material: powdered steel
- Weight: 8,23 kg
- Colour: RAL 9006 (standard)
- Mousepad right and left extendable
- Keyboard support surface: 485 x 150 mm (width x depth)



ergo.slide CS-3000 neXt

- Material: polyamide
- Weight: 0,295 kg
- Colour: black

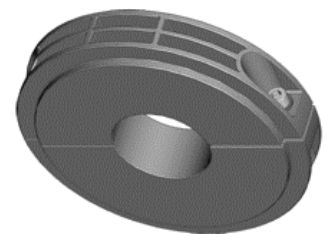
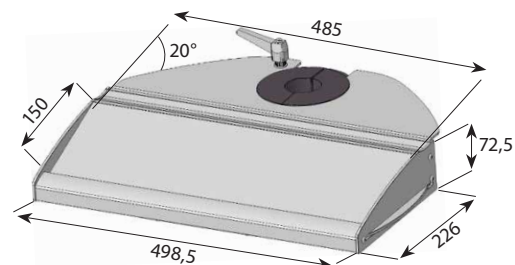
ergo.slide CS-480 B.flex

Keyboard shelf with mousepad right/left

9806000111

Keyboard shelf CS-4000 neXt

- Material: powdered steel
- Weight: 8,23 kg
- Colour: RAL 9006 (standard)
- Mousepad right and left extendable
- Keyboard support surface: 485 x 150 mm (width x depth)



ergo.slide CS-480 B.flex

- Material: polyamide
- Weight: 0,35 kg
- Colour: black

Ordering data

Article

Figure (data in mm)

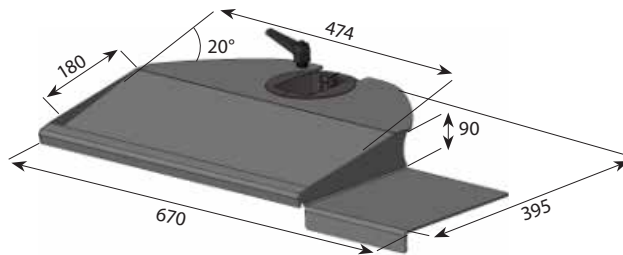
ergo.slide CS-3000

Keyboard shelf with mousepad right

9806000112

Sheet metal keyboard shelf

- Material: powdered steel
- Weight: 6,575 kg
- Colour: RAL 9006 (standard)
- Mousepad fixed
- Keyboard support surface: 474 x 180 mm (width x depth)



ergo.slide CS-3000

- Material: polyamide
- Weight: 0,235 kg
- Colour: black

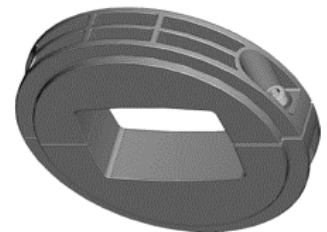
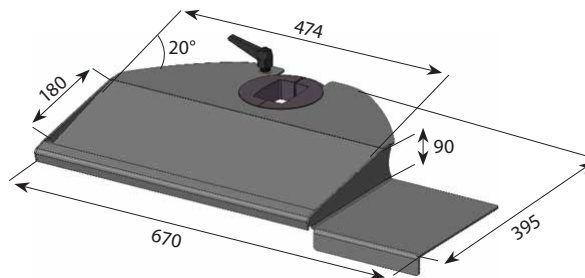
ergo.slide CS-3000next

Keyboard shelf with mousepad right

9806000113

Sheet metal keyboard shelf

- Material: powdered steel
- Weight: 6,575 kg
- Colour: RAL 9006 (standard)
- Mousepad fixed
- Keyboard support surface: 474 x 180 mm (width x depth)



ergo.slide CS-3000 neXt

- Material: polyamide
- Weight: 0,295 kg
- Colour: black

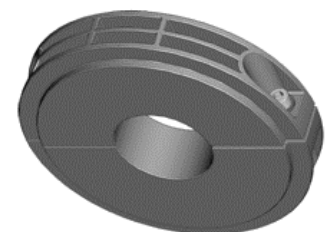
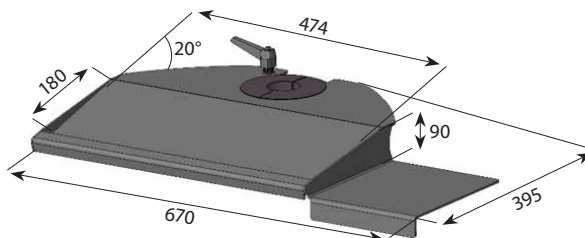
ergo.slide CS-480 B.flex

Keyboard shelf with mousepad right

9806000114

Sheet metal keyboard shelf

- Material: powdered steel
- Weight: 6,575 kg
- Colour: RAL 9006 (standard)
- Mousepad fixed
- Keyboard support surface: 474 x 180 mm (width x depth)



ergo.slide CS-480 B.flex

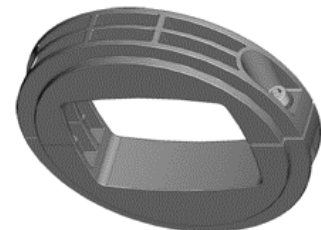
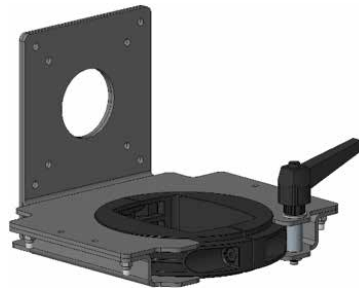
- Material: polyamide
- Weight: 0,35 kg
- Colour: black

Article
Figure
ergo.slide CS-3000
VESA
9806000138
VESA (75/100)

- Central passage Ø50
- Material: powdered steel
- Weight: 1,69 kg
- Colour: RAL 9006 (standard)

ergo.slide CS-3000

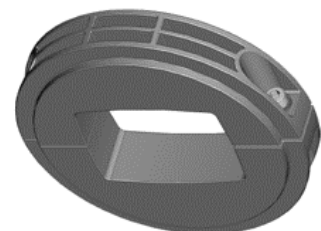
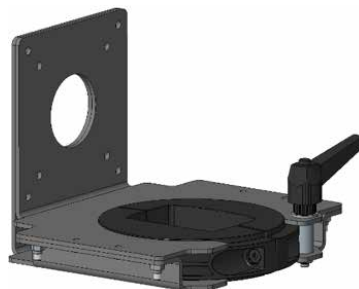
- Material: polyamide
- Weight: 0,235 kg
- Colour: black


ergo.slide CS-3000neXt
VESA
9806000139
VESA (75/100)

- Central passage Ø50
- Material: powdered steel
- Weight: 1,69 kg
- Colour: RAL 9006 (standard)

ergo.slide CS-3000 neXt

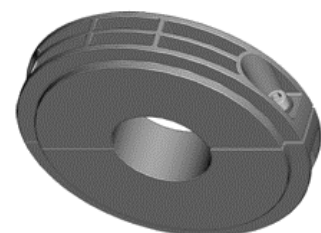
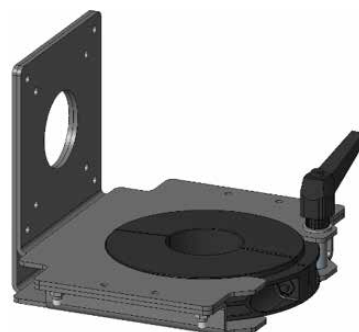
- Material: polyamide
- Weight: 0,295 kg
- Colour: black


ergo.slide CS-480 B.flex
VESA
9806000140
VESA (75/100)

- Central passage Ø50
- Material: powdered steel
- Weight: 1,69 kg
- Colour: RAL 9006 (standard)

ergo.slide CS-480 B.flex

- Material: polyamide
- Weight: 0,35 kg
- Colour: black

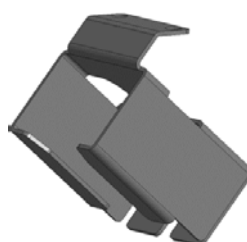


Accessories

Mouse garage
9806000141






- Material: powdered steel
- Weight: 0,293 kg
- Colour: RAL 9006 (standard)
- For mice with max. 68 x 43 mm (width x depth)

Note: The mouse garage can be mounted on all current keyboard shelf variants.



Ordering data

Accessories

Article	Figure
End cap for support tube CS-3000 9806000147 <ul style="list-style-type: none"> Material: aluminium Weight: 0,115 kg Colour: RAL 9006 (standard) 	
End cap for support tube CS-3000neXt 9806000148 <ul style="list-style-type: none"> Material: aluminium Weight: 0,083 kg Colour: RAL 9006 (standard) 	
End cap for support tube CS-480 B.flex 9806000149 <ul style="list-style-type: none"> Material: aluminium Weight: 0,043 kg Colour: RAL 9006 (standard) 	
Wall mounting set for support tube CS-3000 9806000150 <ul style="list-style-type: none"> Material: steel Weight: 1,277 kg Colour: RAL 9006 (standard) 	
Wall mounting set for support tube CS-3000neXt 9806000151 <ul style="list-style-type: none"> Material: steel Weight: 1,025 kg Colour: RAL 9006 (standard) 	
Wall mounting set for support tube CS-480 B.flex 9806000152 <ul style="list-style-type: none"> Material: steel Weight: 1,267 kg Colour: RAL 9006 (standard) 	
Handle screw 9806000184 <ul style="list-style-type: none"> Material: galvanised steel and plastic PA6 Weight: 0,120 kg Colour of handle: black <p>Note: Replacement of the screw for clamping the ergo.slide. This enables tool-free operation.</p>	

Notes

Plans. Sketches. Ideas.



A large grid of small dots for sketching or writing.

**DETECT****We make
safety happen.****PROTECT****We keep safe
your visions.**

Contact

International Headquarters
BERNSTEIN AG
Hans-Bernstein-Str. 1
32457 Porta Westfalica
Phone +49 571 793-0
Fax +49 571 793-555
info@bernstein.eu
www.bernstein.eu

Denmark
BERNSTEIN A/S
Phone +45 7020 0522
Fax +45 7020 0177
info.denmark@bernstein.eu

France
BERNSTEIN S.A.R.L.
Phone +33 1 64 66 32 50
Fax +33 1 64 66 10 02
info.france@bernstein.eu

Italy
BERNSTEIN S.r.l.
Phone +39 035 4549037
Fax +39 035 4549647
info@it.bernstein.eu

United Kingdom
BERNSTEIN Ltd
Phone +44 1922 744999
Fax +44 1922 457555
sales@bernstein-ltd.co.uk

Austria
BERNSTEIN GmbH
Phone +43 2256 62070-0
Fax +43 2256 62618
office@bernstein.at

Switzerland
BERNSTEIN (Schweiz) AG
Phone +41 44 775 71-71
Fax +41 44 775 71-72
info.schweiz@bernstein.eu

Hungary
BERNSTEIN Kft.
Phone +36 1 4342295
Fax +36 1 4342299
info@hu.bernstein.eu

China
BERNSTEIN Safe Solutions
(Taicang) Co., Ltd.
Phone +86 512 81608180
Fax +86 512 81608181
info@bernstein-safesolutions.cn

www.bernstein.eu