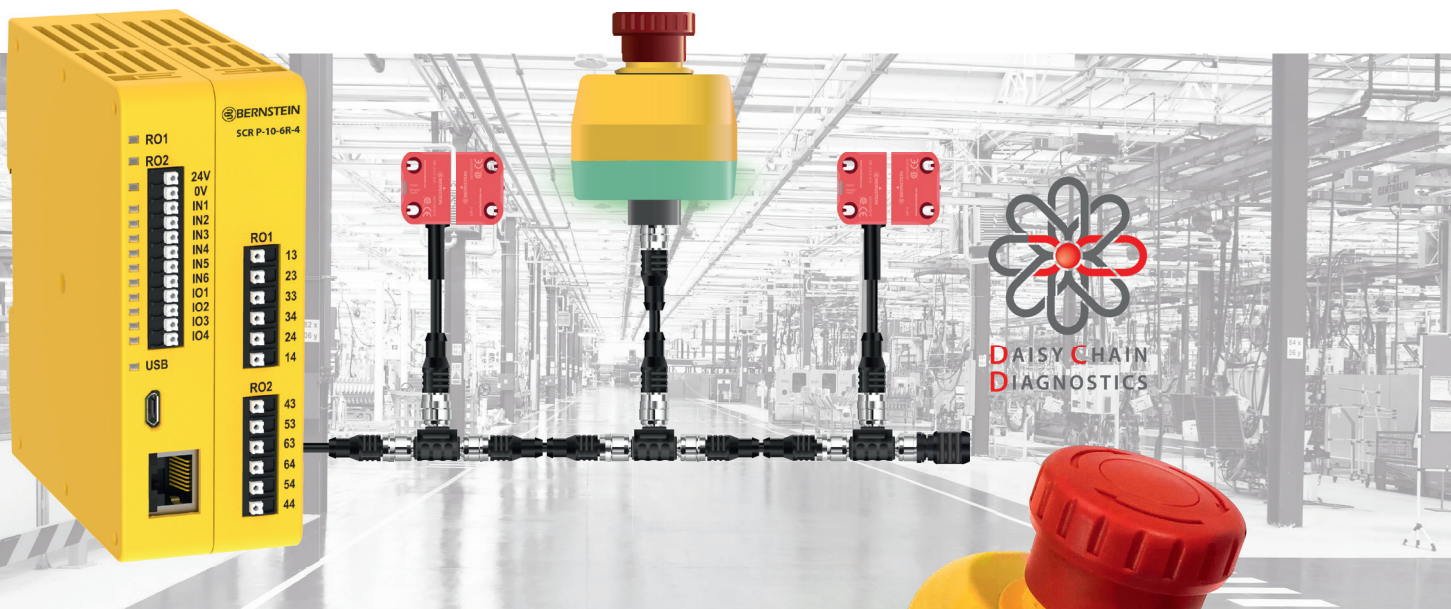


NEW



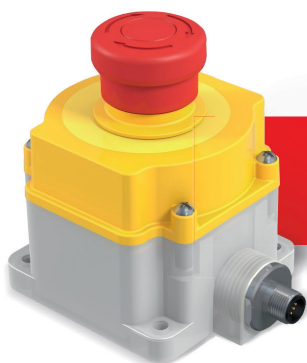
Shine a Light on Innovative Safety Technology The Emergency Stop Button SEU

In order to simply and intelligently implement the requirement of the Machinery Directive, that every machine has to be equipped with at least one Emergency Stop device, BERNSTEIN AG launches a new generation of emergency stop buttons offering modern and smart features perfectly suited for a variety of applications.



PRODUCT-HIGHLIGHTS

- **Current status clearly visible** through large LED display
- **Comprehensive diagnostic possibilities** thanks to patented BERNSTEIN DCD Technology
- **Reduction of downtimes** due to visible status display and extensive DCD diagnostic data
- **Simple wiring** thanks to integrated M12 connector
- **OPTIONAL Local reset function** maximises user safety



Simple. Perfect. Integration
into the SMART Safety System





We make
safety happen.

Available as base or flush mount version

[illegible]

Technical Data

- **Rated operational voltage (Ue):** 24 V DC
- **Housing/button material:** Polycarbonate / Polyamide
- **Safety data:** Up to PL e / Cat. 4 and SIL CL 3
- **Ambient Temperature:** -25 °C to +50 °C
- **IP rating:** IP65 / with WDC IP67 / IP69 (EN 60529)
- **Certifications:**  

Accessories and order details

Diagram of the mounting plate showing dimensions and labels:

- Overall width: 85
- Overall height: 60
- Mounting plate width: 45
- Mounting plate height: 80
- Label A points to the mounting holes.
- Label B points to the mounting plate.

Silicone Washdown Cover

SEU-WDC