



Electromechanical components

AIR CONDITIONERS FOR SWITCH CABINETS

SPECTRACOOOL SLIM FIT



[REDEFINING STANDARD]



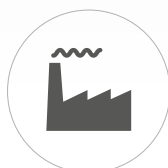
THE ULTIMATE IN COOLING CONVENIENCE



**Loaded with features and options
to take the hassles out of industrial
cooling.**

Specially designed and developed to meet the requirements of worldwide industrial customers. SpectraCool Slim Fit air conditioners are **easy to specify** and **ready to use**.

With filterless operation, global certifications and with our new remote access controller, the SpectraCool Slim Fit air conditioner makes automation cooling easy for system designers and operations maintenance teams around the world.



Industrial applications

Covering most Industrial applications including machine tool, automotive packaging systems, wood forming, factory robotics, material handling and more.

[FEATURES AND BENEFITS]

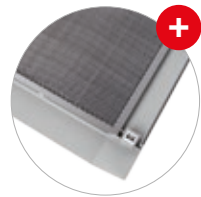
3

Three different mounting options and all in the same model.



Reduced maintenance

Optimized air flow.
Filterless operation.



Easy fit

Front cover easy to remove.
Easy filter replacement
when needed for extremely
dusty applications.

Energy efficient to control operating costs

- Cooling capacity: 300 Watt to 4000 Watt
- Voltage: 230 V (50/60 Hz), 115 V (50/60 Hz) and 400/460 V 3-phase (50/60 Hz)
- Protection class: IP 54 (internal loop) / UL Type 12
- Operating temperature range: 10 °C to 55 °C
- Slim depth with 3 mounting options
- Standard RAL 7035 light grey paint color

Features and benefits

- High-efficiency rotary compressor – decreases operating costs
- Active condensate management – prevents dripping water
- Remote access control option – monitoring worldwide
- Dust-resistant coils for filterless operation – save maintenance costs
- Easy filter replacement – for extremely dusty environments
- Attractive aesthetics – optimized air flow



4 [REMOTE ACCESS CONTROL]

Monitor and manage your industrial cooling simply from your PC or Laptop.



The remote access control system means you can avoid the surprise of an overheating cabinet wherever your industrial system is deployed around the world.

Wherever your SpectraCool Slim Fit air conditioner is located, you can monitor and manage it without repeated, time-consuming and expensive maintenance visits.



Features

- Direct pushbutton control and display indication of program variables, temperature, and enabled functions including cooling and alarms
- Integrated 3-digit alphanumeric display provides status codes and at-a-glance display of cabinet temperature
- Pre-programmed with cooling set points that are easily adjusted to changing needs
- Seven alarm conditions including door open, high pressure, air inlet and outlet temperature sensors, low temperature, high temperature, and frost
- Free PC interface software tool assigns a unique IP address to each SpectraCool Slim Fit unit equipped with remote access control, allowing system-wide management of multiple units
- Communicates via USB and Ethernet with common industrial protocols like SNMP, EtherNet/IP, Modbus-TCP or Profinet



Industry standards

- UL/cUL Listed; Type 12; File No. SA6453
- CE, EAC, RoHS
- Cooling performance tested by TÜV SÜD Germany, according to DIN EN 14511
- IP 54 internal loop, IP 34 external loop

Indoor applications

- Automation
- Machine Tool
- Automotive
- Packaging Systems, Material Handling
- MRO (Maintenance Repair Operation)

Specifications

- Cooling capacity: 300 Watt to 4000 Watt
- Voltage: 230 V (50/60 Hz), 115 V (50/60 Hz) and 400/460 V 3-phase (50/60 Hz)
- Operating temperature range: 10 °C to 55 °C
- Setting temperature range: 20 °C to 55 °C

Options

- Filter
- Drain tube kit
- Remote access control by Comm-Board

Finish

- Standard RAL 7035 light grey paint color
- Other colors and textures on request

Features

- Protection class: IP 54 (internal loop) / UL Type 12
- Standardized dimensions and cutouts – easy exchange by cutouts and mounting points
- Slim depth with 3 mounting options: surface, partial recess and full recess mount; mounting options all in the same model; easy changeable
- Attractive design plastic cover with high, optimized airflow
- Dust resistant coils for filterless operation
- High efficiency rotary compressor
- Active condensate management with heater strip
- Smart controller with easy setup, status codes and alarm output
- Door switch capability and alarm output
- Terminal block
- Remote access control – Worldwide monitoring with SNMP, Ethernet/IP, Modbus-TCP and ProfiNet

Delivery comprises

- Air conditioner unit
- Mounting gasket and hardware kit
- Cutout template
- Instruction manual
- Quick start guide

6 [WORLDWIDE SERVICES – STANDARD WARRANTY]

Pre- and post-sale support. We help you choose the right product for your application and offer full service worldwide.

WORLDWIDE ON-SITE SERVICE



Maintenance and repair (MRO)

- Regional spare part inventory
- Easy air conditioner part access and replacement
- Standard warranty with extension options

[OVERVIEW SLIM FIT]

7



Part number	Cooling capacity [W] [50/60 Hz]	Voltage [V] [50/60 Hz]	Dimensions [mm] [H x W x D]	Weight [kg]
S060316G031	370 / 420	115	550 x 280 x 142	13
S060326G031	370 / 420	230	550 x 280 x 142	13
S060516G031	550 / 640	115	550 x 280 x 199	15
S060526G031	550 / 640	230	550 x 280 x 199	15
S101016G031	1300 / 1380	115	951 x 400 x 260	39
S101026G031	1300 / 1380	230	951 x 400 x 260	39
S101046G031	1300 / 1380	400 / 460 1 ph.	951 x 400 x 260	45
S101516G031	1800 / 1880	115	951 x 400 x 260	43
S101526G031	1800 / 1880	230	951 x 400 x 260	43
S101546G031	1800 / 1880	400 / 460 3 ph.	951 x 400 x 260	43
S162016G031	2200 / 2400	115	1580 x 400 x 295	68
S162026G031	2200 / 2400	230	1580 x 400 x 295	68
S162046G031	2200 / 2400	400 / 460 3 ph.	1580 x 400 x 295	68
S162516G031	2680 / 2800	115	1580 x 400 x 295	70
S162526G031	2680 / 2800	230	1580 x 400 x 295	70
S162546G031	2680 / 2800	400 / 460 3 ph.	1580 x 400 x 295	70
S164046G031	4000 / 4500	400 / 460 3 ph.	1580 x 500 x 339	92



Part number ends with **...G041**
for controllers with Comm-Board

[**ELMEKO – YOUR SYSTEM PARTNER**]

ELMEKO stands for “electromechanical components” for modern switchgear cabinet engineering.



As a competent partner for industry with decades of experience in the area of electrical control and switchgear cabinet air-conditioning systems, ELMEKO develops, manufactures and markets innovative **cooling, heating, dehumidifying** and **lighting** components for switchgear cabinets.

ELMEKO also supplies important accessories such as temperature and humidity controllers. Apart from standard products that are available ex-warehouse, special customized solutions can be realized at short notice.

ELMEKO GmbH + Co. KG

Graf-Zeppelin-Str. 5
56479 Liebenscheid, Germany
Phone +49 2736 / 509748-0
info@elmeko.de
www.elmeko.de

