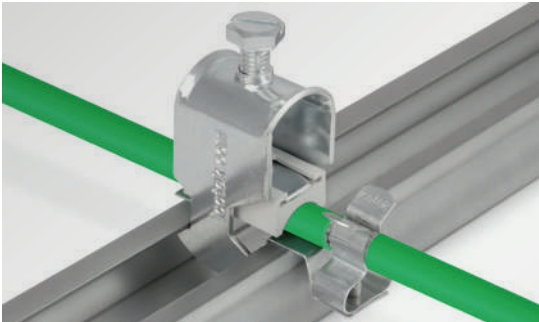


# Product set of EMC shield clamps and cable clamps for 30 mm C-rails



CC-LFC/MSKL

Convenient product set consisting of the LFC EMC shield clamp for contacting the cable shield and discharging interference currents in combination with the matching CCL cable clamp for strain relief on the cable jacket.

The combination of two products helps to save space and material in the enclosure. The EMC connection of the cables no longer has to be made via an additional top hat DIN rail or bus bar.

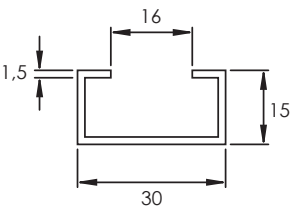
Advantages & benefits

- Space-saving due to the combination of the LFC shield clamp with the CCL cable clamp
- Quick and easy assembly
- Large variety of clamping areas
- Large cable shield contact area
- Shield contacting and strain relief are separated from each other
- For mounting on all common C-rails with an opening dimension of 16–17 mm

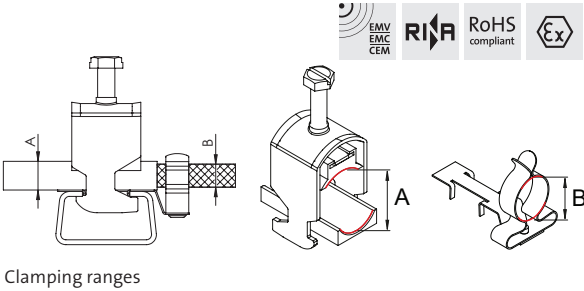
Specifications

Material

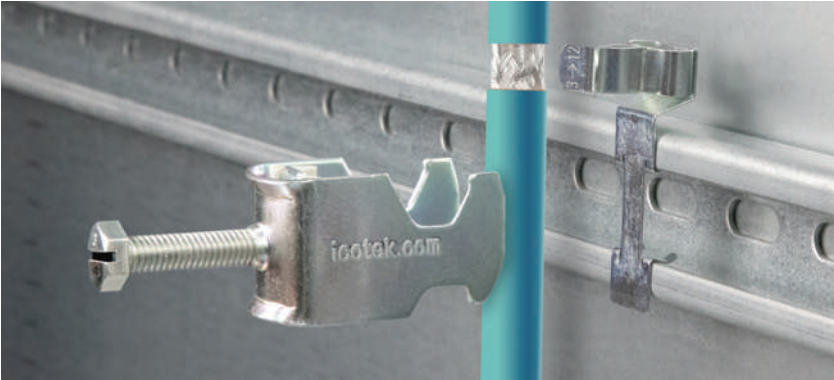
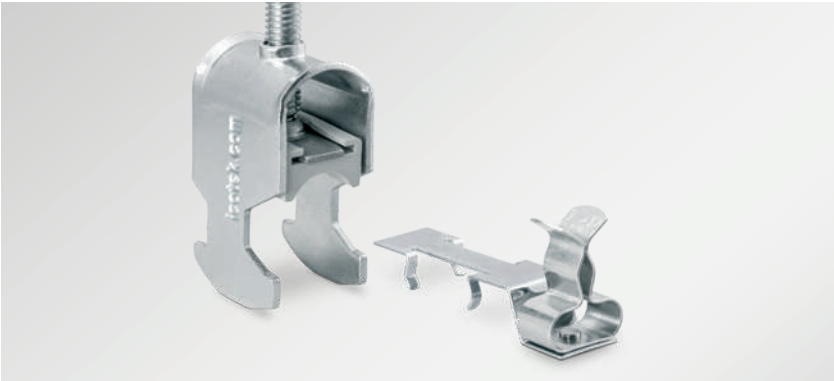
- LFC: Spring steel galvanised
- Cable clamp: Steel galvanised



C-rail dimensions (mm)



Type	Clamping range A Cable clamp (Ø on the cable sheath)	Clamping range B Shield clamp (Ø on the cable shield)	Order No.	PU
CC-LFC 6-13   MSKL 3-12	6 – 13 mm	3 – 12 mm	37680	10
CC-LFC 12-19   MSKL 8-18	12 – 19 mm	8 – 18 mm	37681	10
CC-LFC 18-23   SKL 17-22	18 – 23 mm	17 – 22 mm	37682	10
CC-LFC 23-32   SKL 22-30	23 – 32 mm	22 – 30 mm	37683	10
CC-LFC 32-38   SKL 30-38	32 – 38 mm	30 – 38 mm	37688	10
CC-LFC 38-42   SKL 30-38	38 – 42 mm	30 – 38 mm	37684	10
CC-LFC 42-50   SKL 38-48	42 – 50 mm	38 – 48 mm	37685	10
CC-LFC 50-64   SKL 44-56	50 – 64 mm	44 – 56 mm	37686	10
CC-LFC 50-64   SKL 56-68	50 – 64 mm	56 – 68 mm	37687	10



4  
4.1  
4.2  
4.3  
4.4