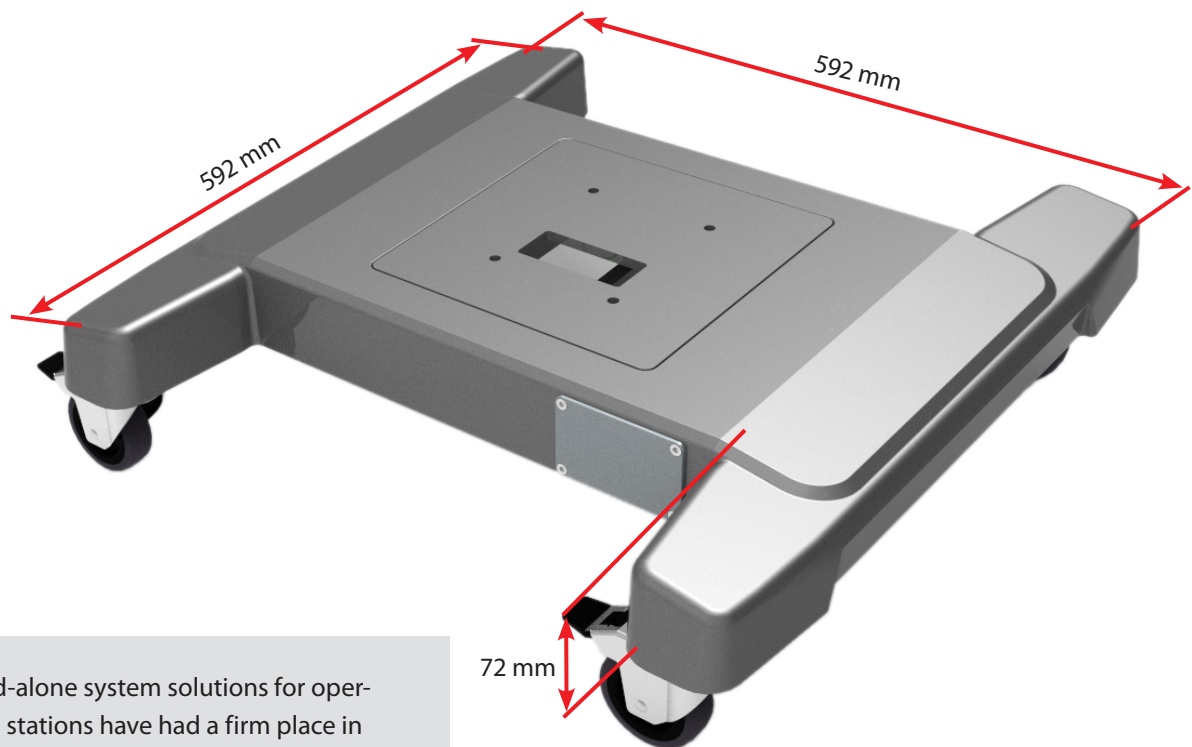




**flex.base**

... to stay safely on the ground!

The **flex.base** offers a pedestal solution for operator stations to give flexible positions, maneuverability and yet stability in production. Expandable with a wide range of accessories such as castors, adjustable feet or additional weights, the stand provides both mobility and optional static positioning for all BERNSTEIN suspension systems. This ergonomically thought-out, convertible and high-quality operator station component is a helpful solution for optimising mobility and flexibility in the field of production technology.



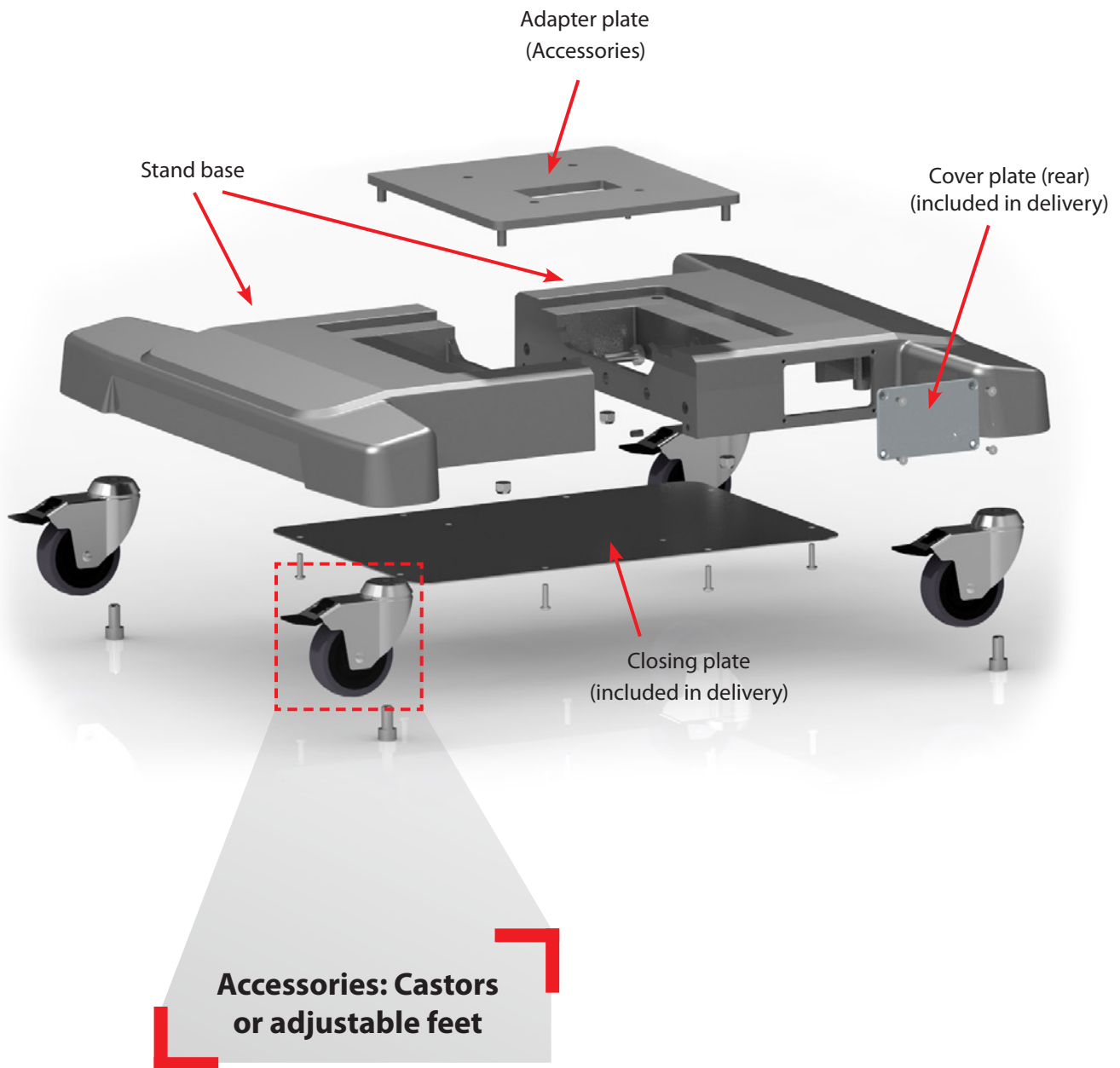
Stand-alone system solutions for operating stations have had a firm place in the mechanical engineering and plant construction market for years. The requirements range from fixed, stable solutions to height-adjustable variants and mobile systems. Such products are rounded off with optional accessories for floor mounting or rollable design.

- Free-standing pedestal for adaptation of all BERNSTEIN suspension systems
- Alternatively screwed to the floor
- Optionally with castors

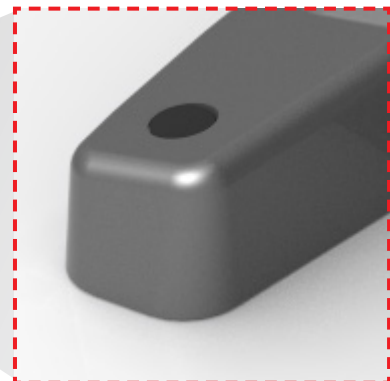
### Technical data

- Weight stand base: approx. 11.1 kg
- Weight adapter plate: 3.6 kg
- Material stand base: die-cast aluminium
- Material adapter plate: powdered steel
- Integrated earthing screws
- Generous space for cable routing
- Rear cover plate; for own processing

## Technical construction



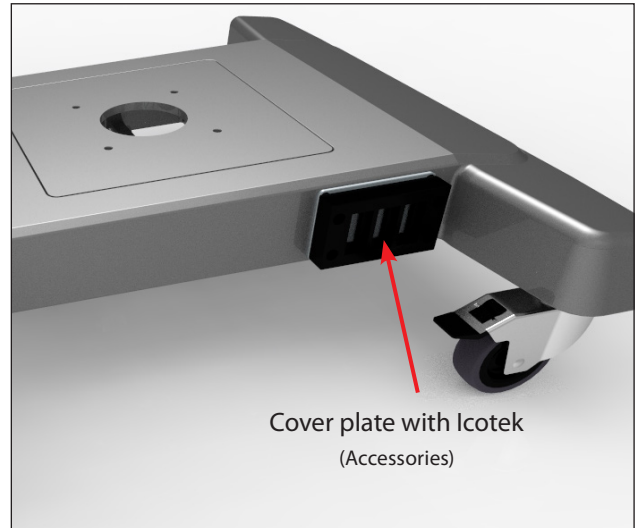
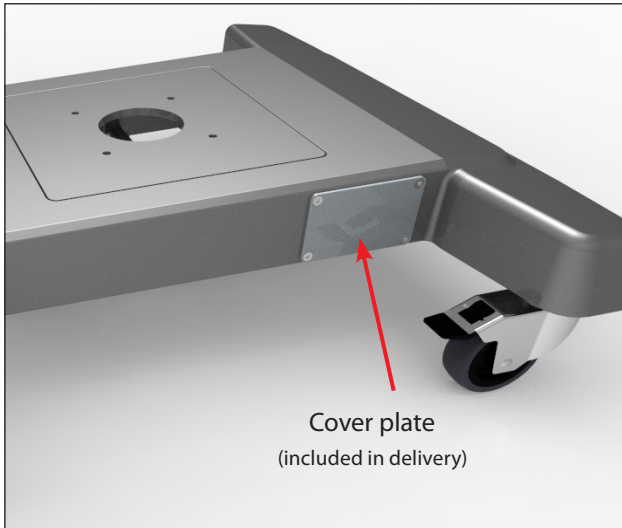
**Variant for floor mounting**



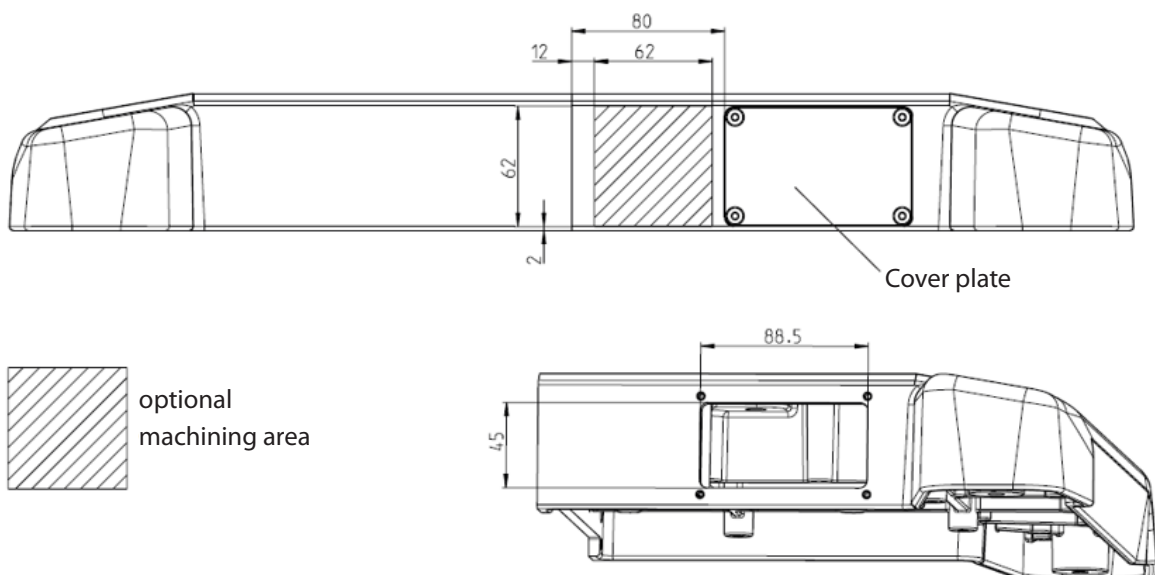
# Rear view

## Cable entry

A cover plate is located on the rear side as cable entry.  
Optionally, the cable entry can also be made with Icotek.

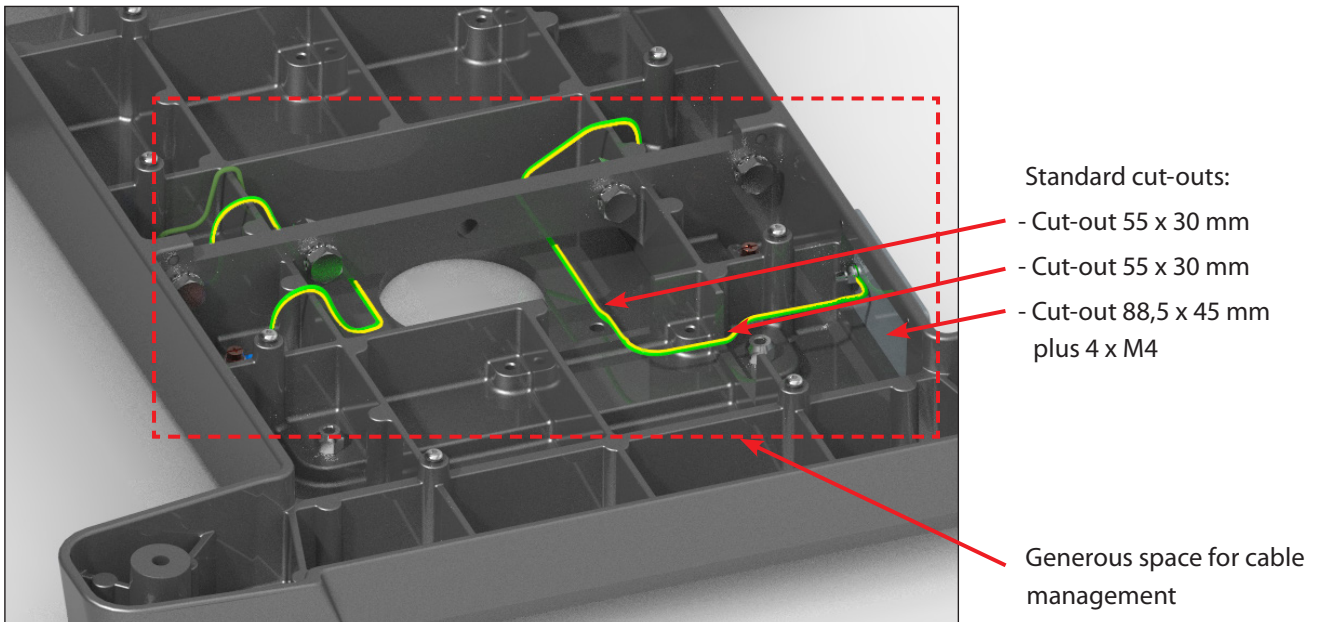


For own processing for cable glands or cable entry systems.

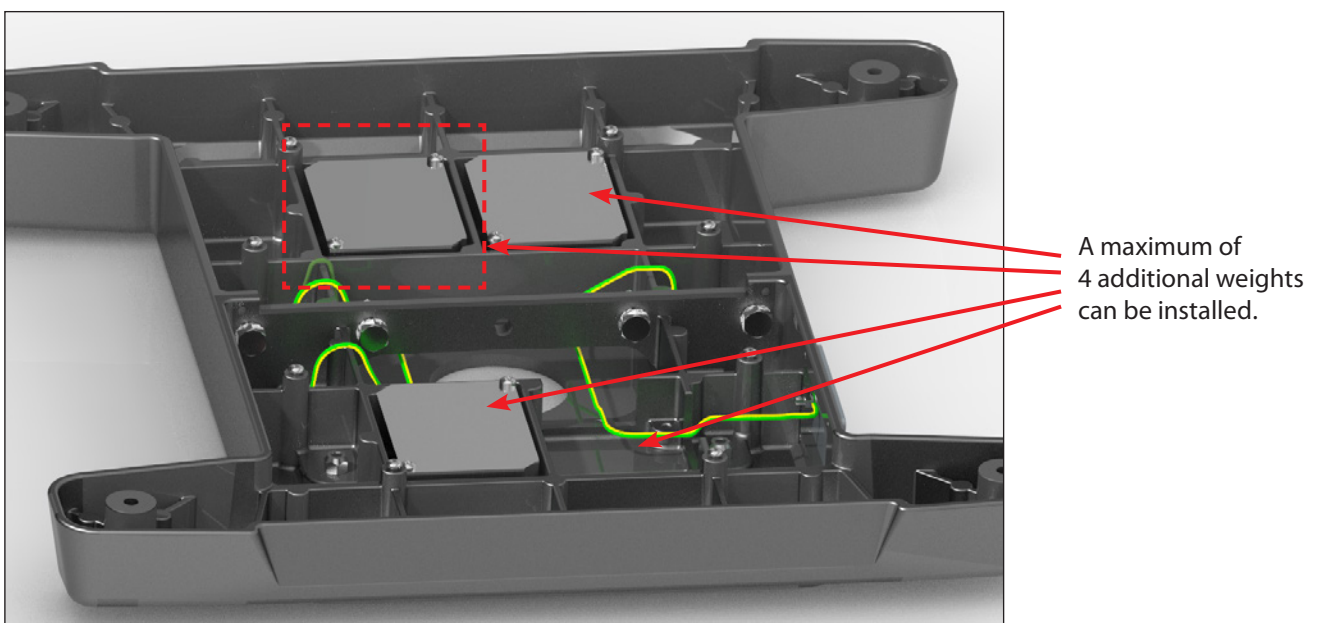


## Earthing / Cable management

The stand base **flexi**.base offers generous space for cable management.  
An integrated earthing concept is also part of the new stand base.



## Additional weight



# Ordering data

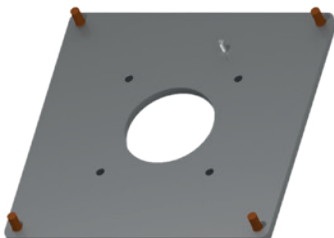
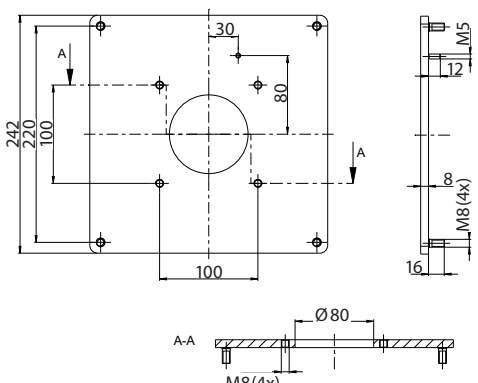
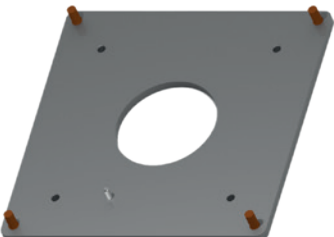
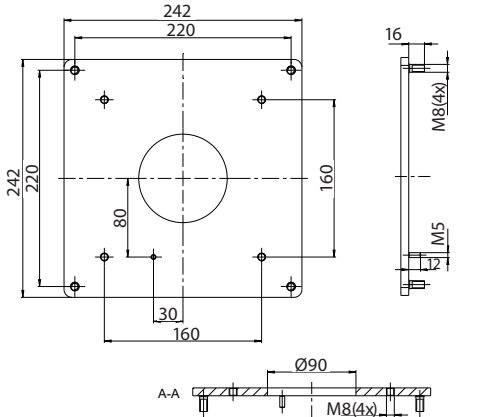
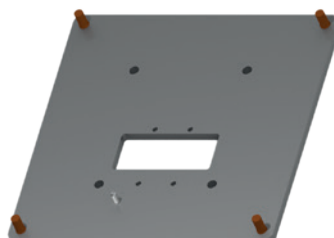
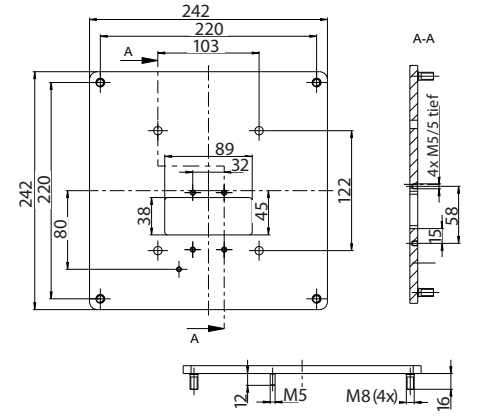
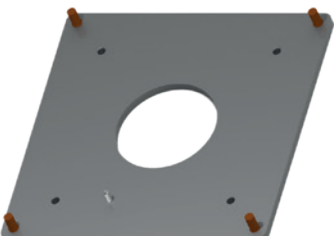
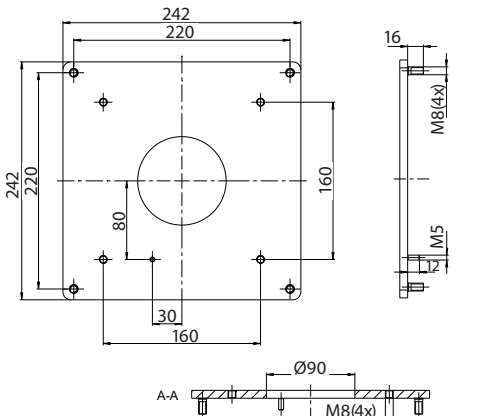
**flex**.base

Article	Figure	Dimension drawing (data in mm)
<p><b>flex.base stand base</b></p> <p><b>1016552200</b> RAL 9006 white-aluminium</p> <ul style="list-style-type: none"> <li>Material: die-cast aluminium</li> <li>Weight: 11.1 kg</li> </ul>		
<p><b>flex.base stand base for floor mounting</b></p> <p><b>1016562200</b> RAL 9006 white-aluminium</p> <ul style="list-style-type: none"> <li>Material: die-cast aluminium</li> <li>Weight: 11.1 kg</li> </ul>		

## flex.base Accessories

<p><b>Adapter plate for CS-480 B.flex stand base, fixed</b></p> <p><b>9806000101</b> RAL 9006 white-aluminium</p> <ul style="list-style-type: none"> <li>Material: powdered steel</li> <li>Weight: 3.6 kg</li> </ul>		
<p><b>Adapter plate for CS-3000 neXt stand base</b></p> <p><b>9806000101</b> RAL 9006 white-aluminium</p> <ul style="list-style-type: none"> <li>Material: powdered steel</li> <li>Weight: 3.6 kg</li> </ul>		



Article	Figure	Dimension drawing (data in mm)
<b>Adapter plate for CS-3000 stand base</b> <b>9806000101</b> RAL 9006 white-aluminium <ul style="list-style-type: none"> <li>Material: powdered steel</li> <li>Weight: 3.6 kg</li> </ul>		
<b>Adapter plate for CS-4000 neXt stand base, fixed</b> <b>9806000098</b> RAL 9006 white-aluminium <ul style="list-style-type: none"> <li>Material: powdered steel</li> <li>Weight: 3.6 kg</li> </ul>		
<b>Adapter plate for CS-4000 neXt Column profile</b> <b>9806000099</b> RAL 9006 white-aluminium <ul style="list-style-type: none"> <li>Material: powdered steel</li> <li>Weight: 3.6 kg</li> </ul>		
<b>Adapter plate for CS-2000 System 80 Supporting column</b> <b>9806000098</b> RAL 9006 white-aluminium <ul style="list-style-type: none"> <li>Material: powdered steel</li> <li>Weight: 3.6 kg</li> </ul>		

# Ordering data

## flexbase Accessories

Article	Figure	Dimension drawing (data in mm)
<p><b>Adapter plate for CS-2000 system 60 stand base</b></p> <p><b>9806000118</b> RAL 9006 white-aluminium</p> <ul style="list-style-type: none"> <li>Material: powdered steel</li> <li>Weight: 3.6 kg</li> </ul>		
<p><b>Adapter plate for CS-2000 SL 45/60 stand base</b></p> <p><b>9806000119</b> RAL 9006 white-aluminium</p> <ul style="list-style-type: none"> <li>Material: powdered steel</li> <li>Weight: 3.6 kg</li> </ul>		
<p><b>Adapter plate for CS-2000 system 80 stand base</b></p> <p><b>9806000120</b> RAL 9006 white-aluminium</p> <ul style="list-style-type: none"> <li>Material: powdered steel</li> <li>Weight: 3.6 kg</li> </ul>		



**Article**
**Figure**
**Castor set (4 pieces industrial rolls)**
**9808012800**

- Rolls Ø 75 mm
- Load capacity per roll: 50 kg
- Incl. assembly material and instructions


**Castor set (4 pieces apparatus rolls)**
**9808015300**

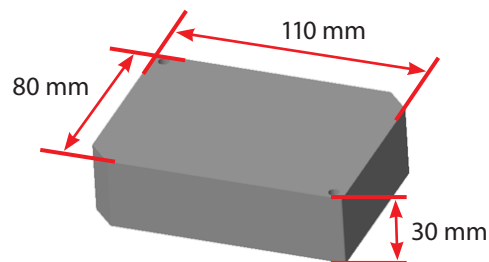
- Rolls Ø 75 mm
- Load capacity per roll: 70 kg
- Incl. assembly material and instructions


**Adjustable feet set (4 pieces)**
**9808012900**

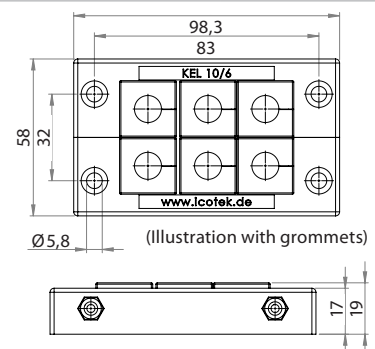
- Height adjustable
- Adjustable overall height: 35–45 mm
- Incl. assembly material and instructions
- Load capacity per adjustable foot: 50 kg


**flex.base additional weight**
**9806000145** RAL 9006 white-aluminium

- Material: steel
- Self-forming screws included
- Weight: 2 kg

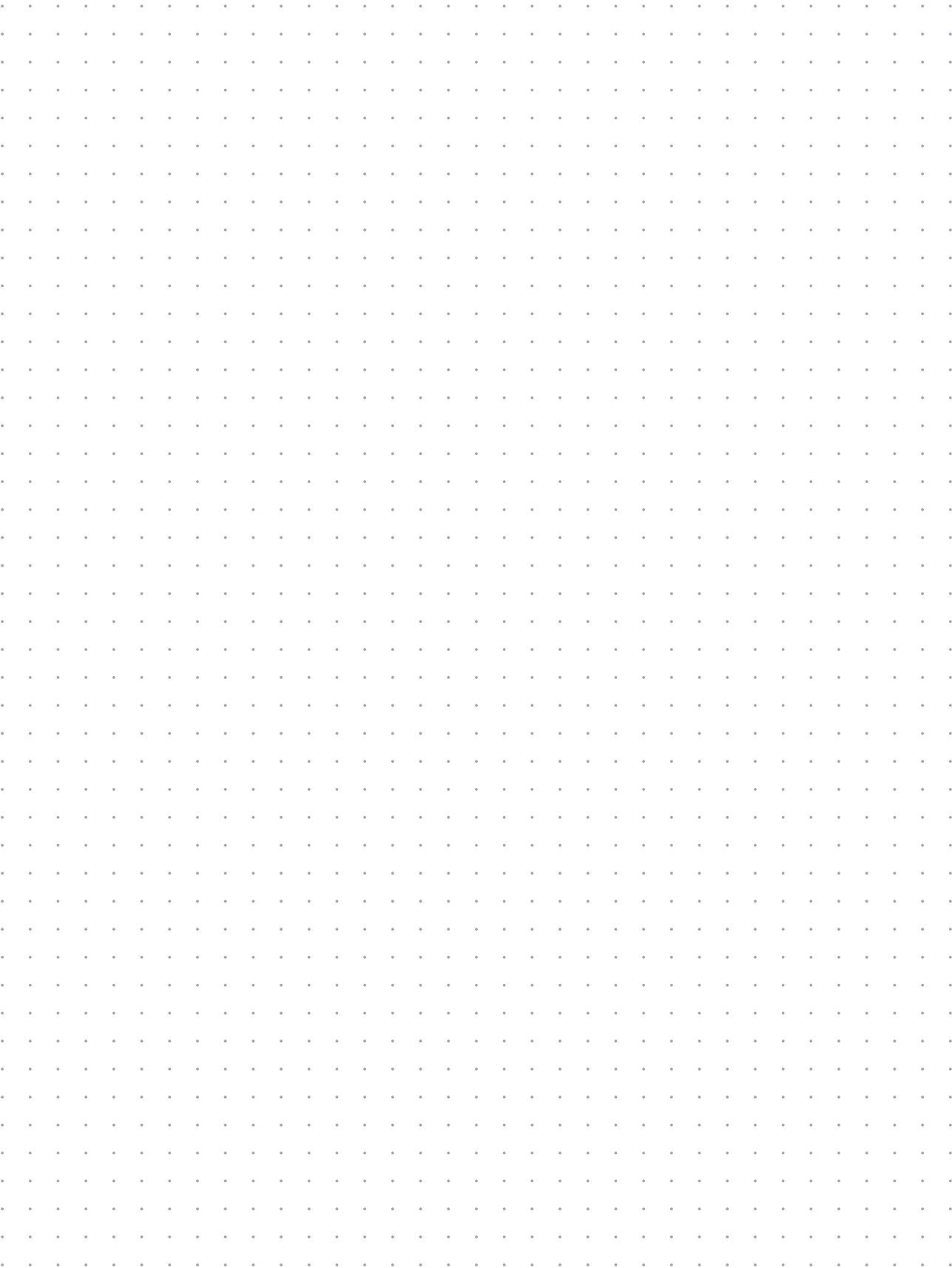

**flex.base Interface plate  
Icotek KEL 10 (without grommets)**
**9806000153**

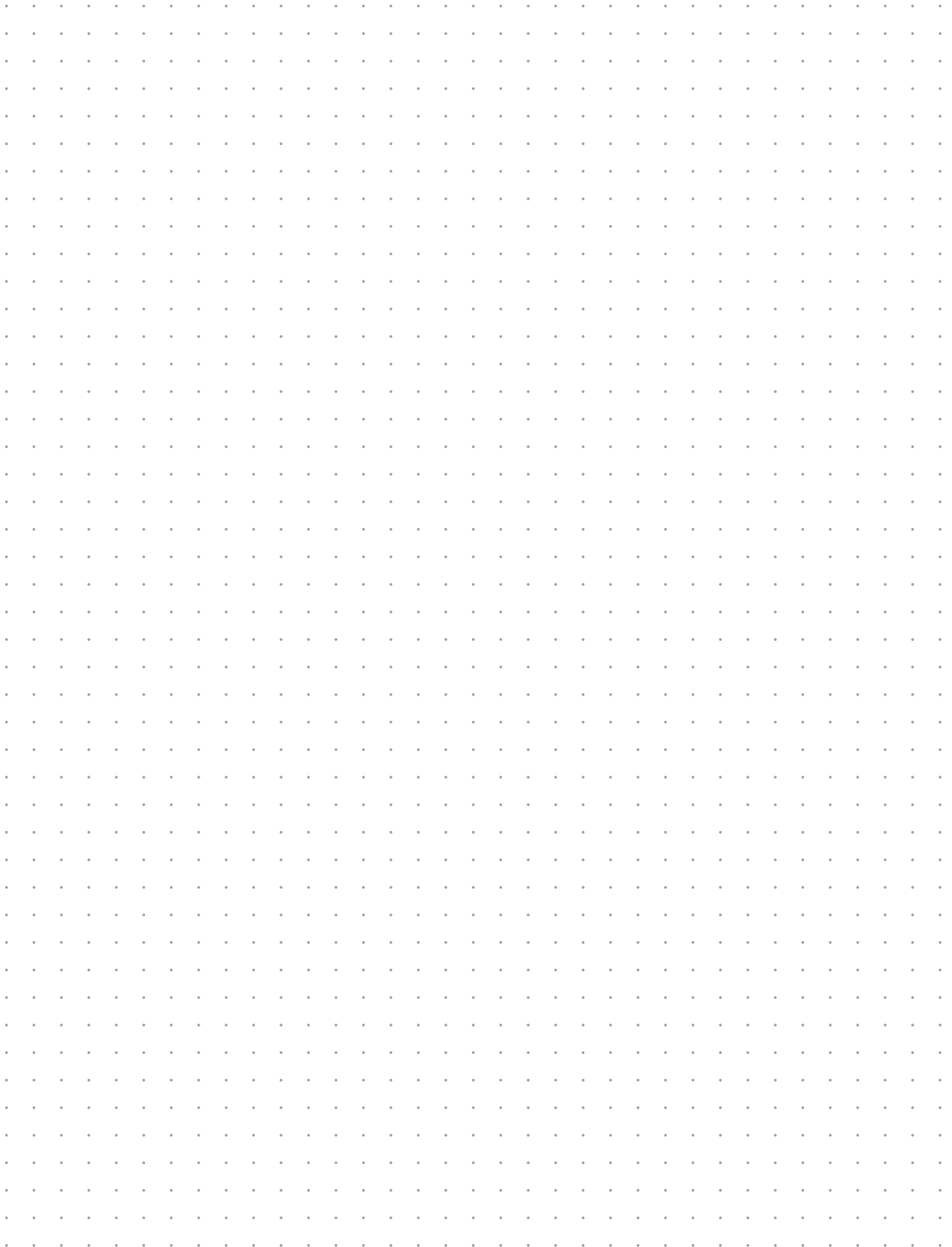
- Material: plastic



# Notes

Diagrams. Sketches. Ideas.





**DETECT****We make  
safety happen.****PROTECT****We keep safe  
your visions.**

700 0000 000 · 05.2020 · Subject to alterations.

## Contact

**International Headquarters  
BERNSTEIN AG**

Hans-Bernstein-Str. 1  
D-32457 Porta Westfalica  
Phone +49 571 793-0  
Fax +49 571 793-555  
info@de.bernstein.eu  
www.bernstein.eu

**Denmark**

**BERNSTEIN A/S**  
Phone +45 7020 0522  
Fax +45 7020 0177  
info@dk.bernstein.eu

**France**

**BERNSTEIN S.A.R.L.**  
Phone +33 1 64 66 32 50  
Fax +33 1 64 66 10 02  
info@fr.bernstein.eu

**Italy**

**BERNSTEIN S.r.l.**  
Phone +39 035 4549037  
Fax +39 035 4549647  
info@it.bernstein.eu

**United Kingdom**

**BERNSTEIN Ltd**  
Phone +44 1922 744999  
Fax +44 1922 457555  
info@uk.bernstein.eu

**Austria**

**BERNSTEIN GmbH**  
Phone +43 2256 62070-0  
Fax +43 2256 62618  
info@at.bernstein.eu

**Switzerland**

**BERNSTEIN (Schweiz) AG**  
Phone +41 44 775 71-71  
Fax +41 44 775 71-72  
info@ch.bernstein.eu

**Hungary**

**BERNSTEIN Kft.**  
Phone +36 1 4342295  
Fax +36 1 4342299  
info@hu.bernstein.eu

**China**

**BERNSTEIN Safe Solutions  
(Taicang) Co., Ltd.**  
Phone +86 512 81608180  
Fax +86 512 81608181  
info@bernstein-safesolutions.cn

**www.bernstein.eu**