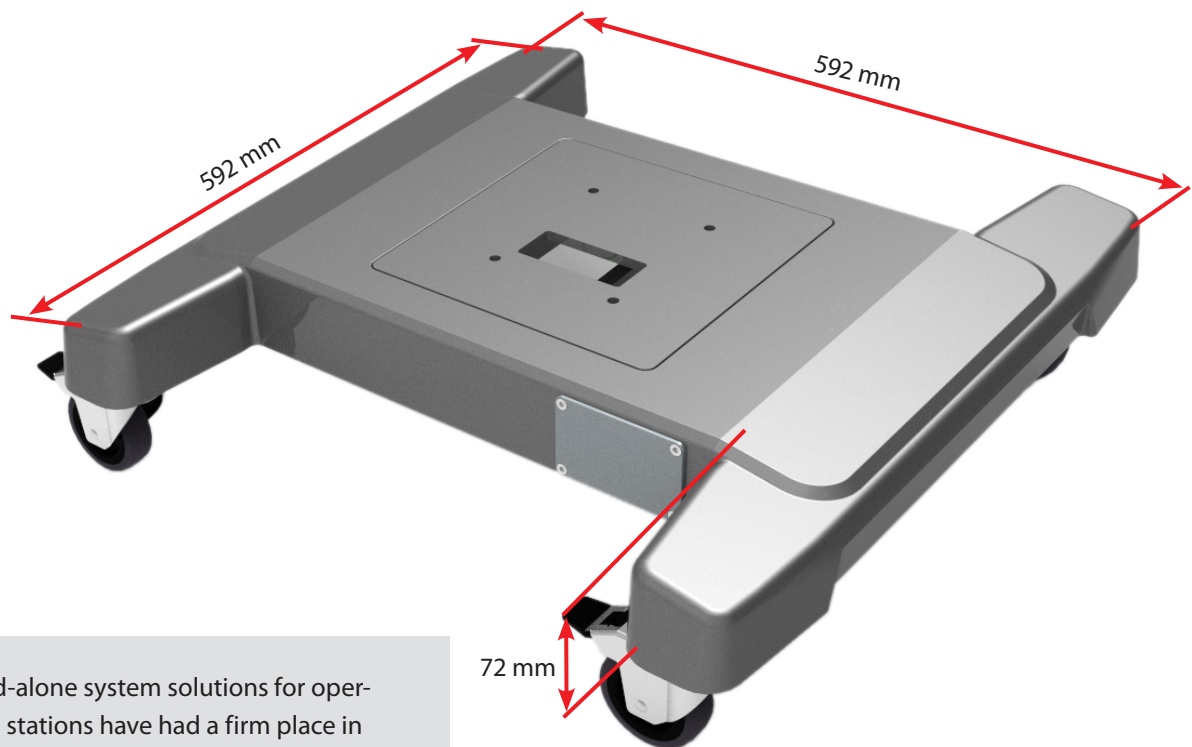




flex.base

... to stay safely on the ground!

The **flex.base** offers a pedestal solution for operator stations to give flexible positions, maneuverability and yet stability in production. Expandable with a wide range of accessories such as castors, adjustable feet or additional weights, the stand provides both mobility and optional static positioning for all BERNSTEIN suspension systems. This ergonomically thought-out, convertible and high-quality operator station component is a helpful solution for optimising mobility and flexibility in the field of production technology.



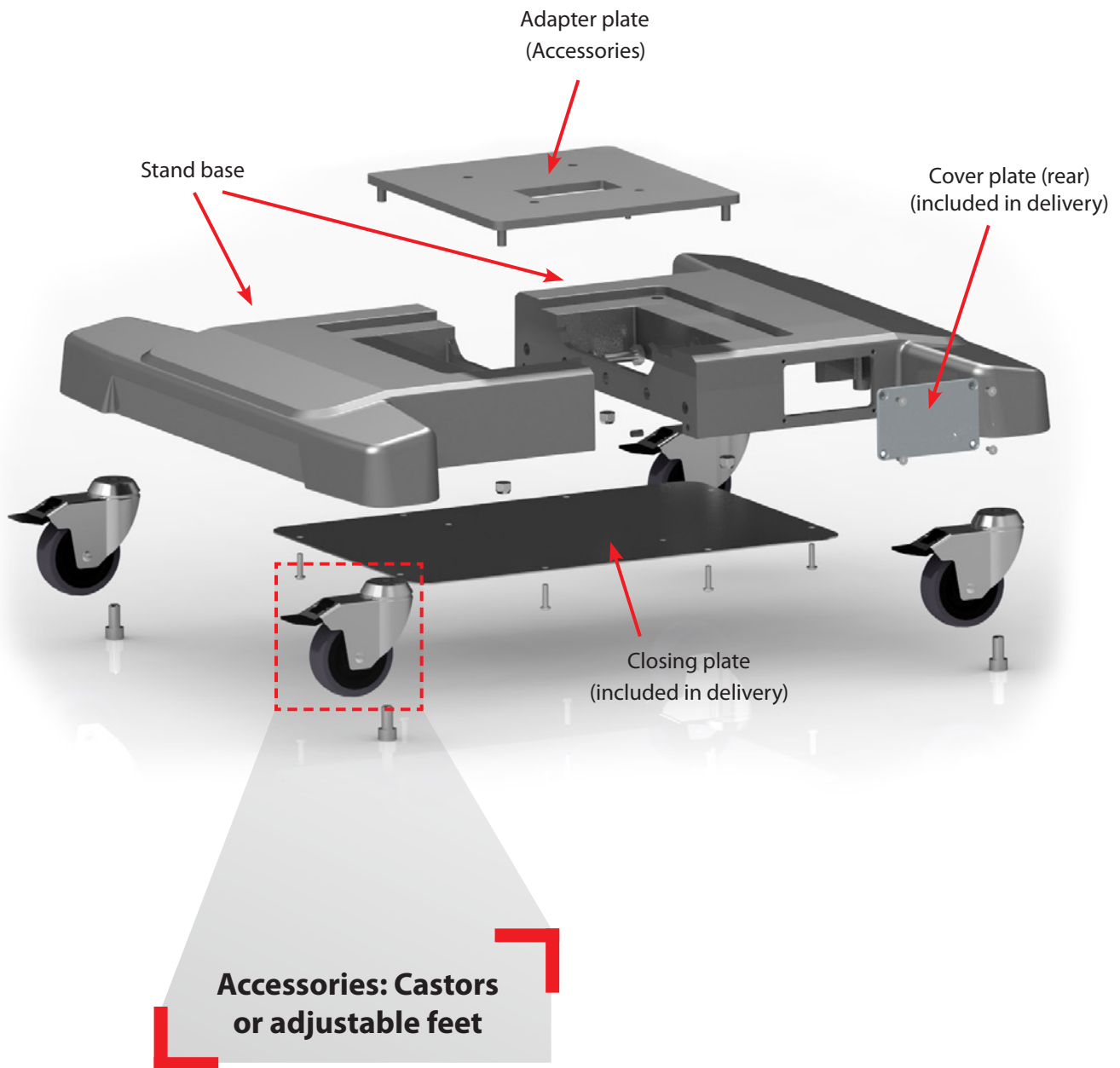
Stand-alone system solutions for operating stations have had a firm place in the mechanical engineering and plant construction market for years. The requirements range from fixed, stable solutions to height-adjustable variants and mobile systems. Such products are rounded off with optional accessories for floor mounting or rollable design.

- Free-standing pedestal for adaptation of all BERNSTEIN suspension systems
- Alternatively screwed to the floor
- Optionally with castors

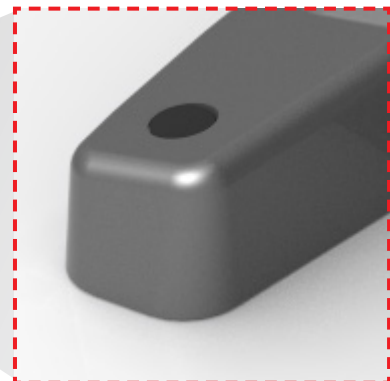
Technical data

- Weight stand base: approx. 11.1 kg
- Weight adapter plate: 3.6 kg
- Material stand base: die-cast aluminium
- Material adapter plate: powdered steel
- Integrated earthing screws
- Generous space for cable routing
- Rear cover plate; for own processing

Technical construction



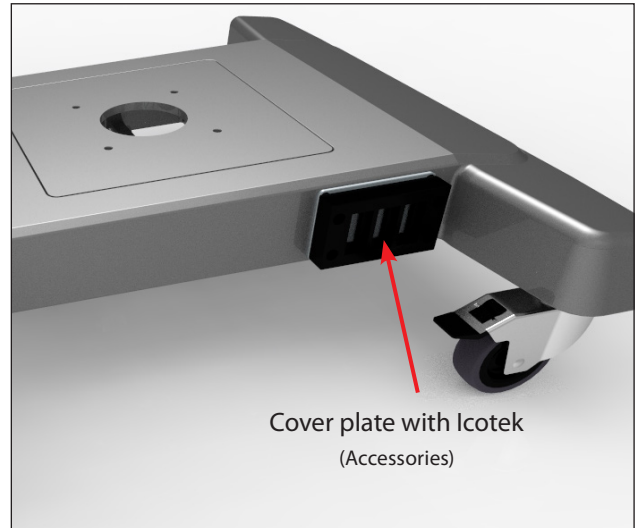
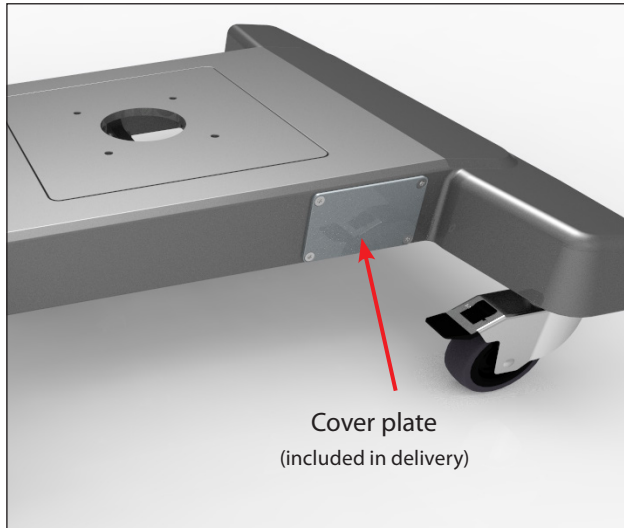
Variant for floor mounting



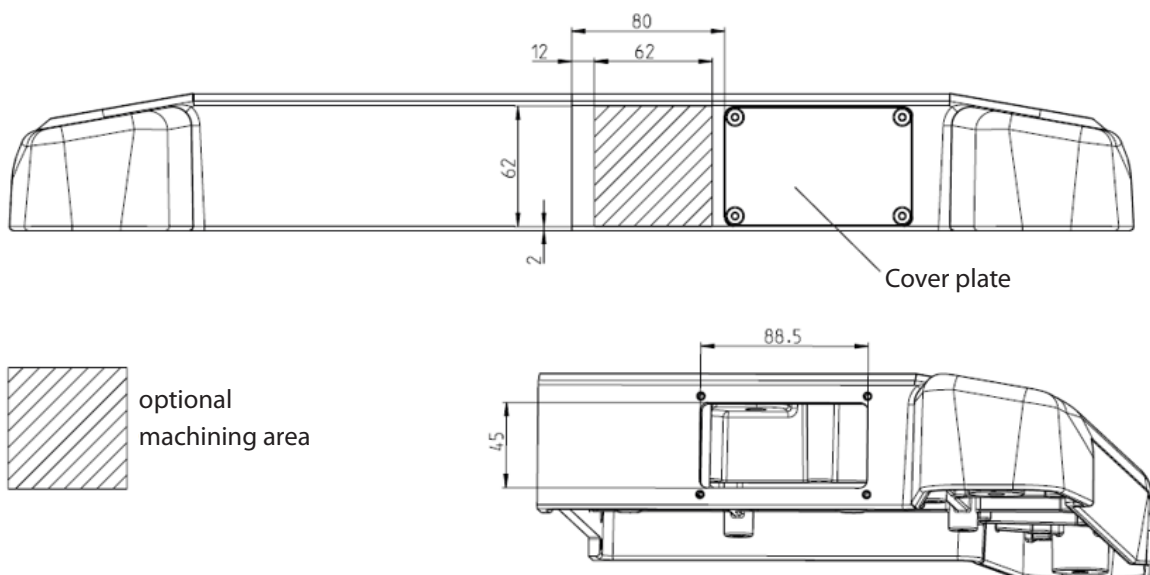
Rear view

Cable entry

A cover plate is located on the rear side as cable entry.
Optionally, the cable entry can also be made with Icotek.

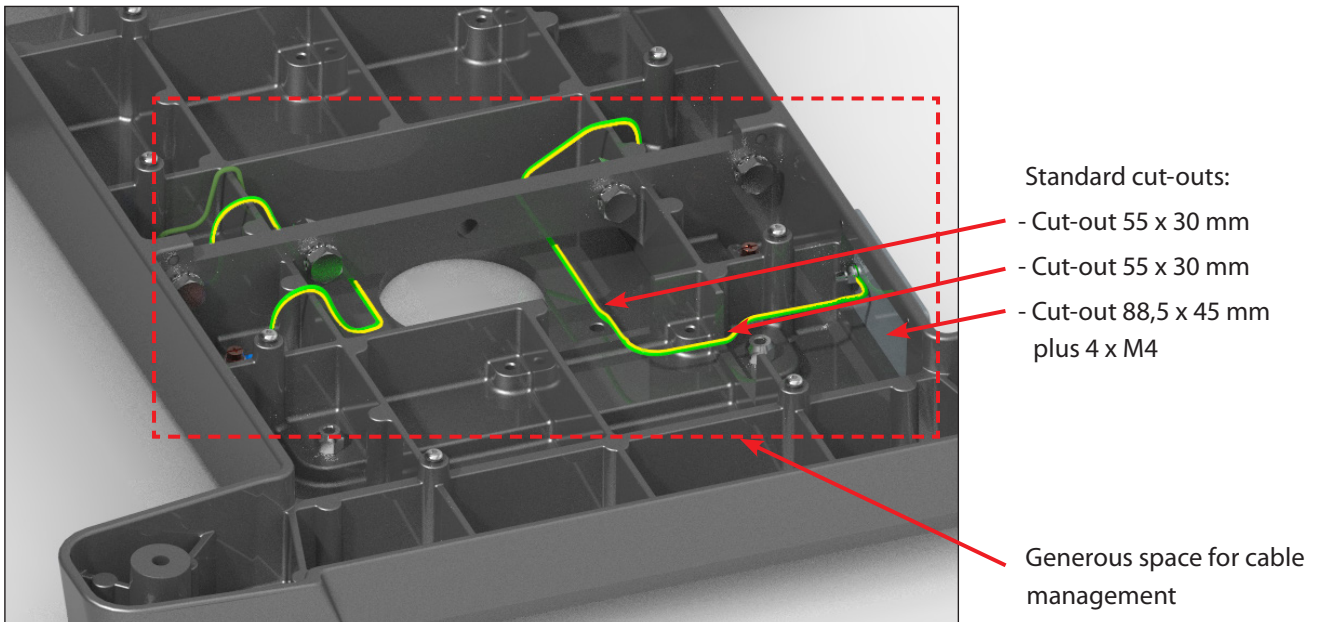


For own processing for cable glands or cable entry systems.

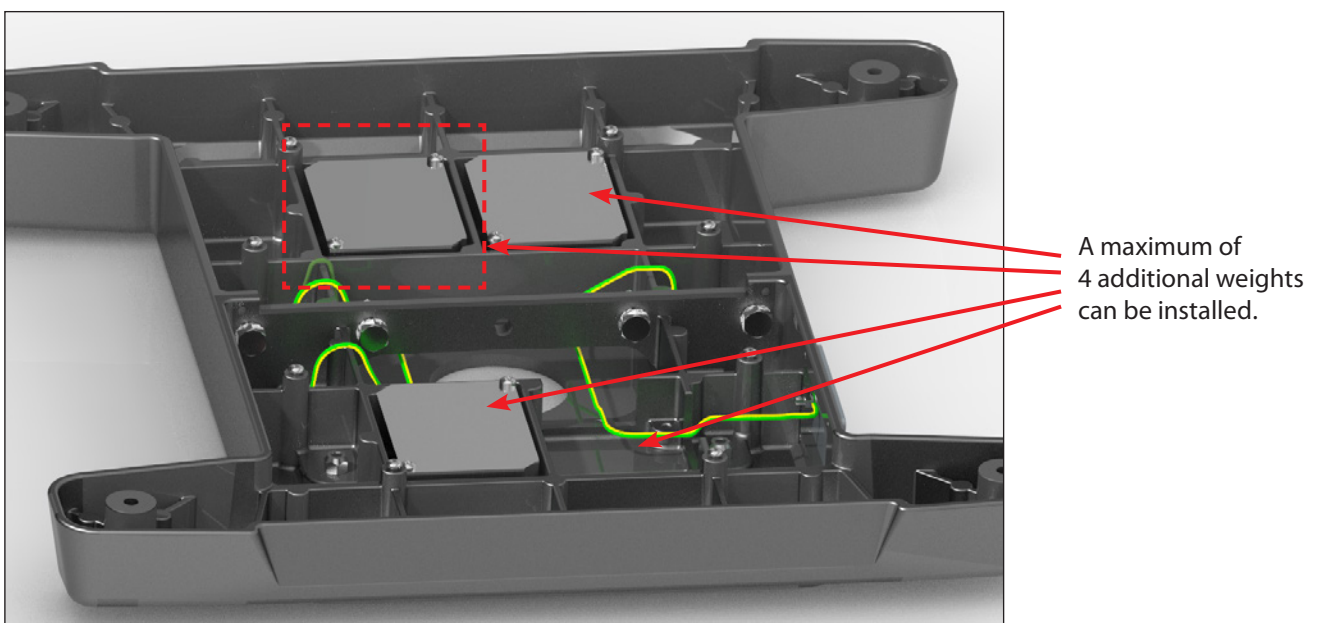


Earthing / Cable management

The stand base **flexi**.base offers generous space for cable management.
An integrated earthing concept is also part of the new stand base.


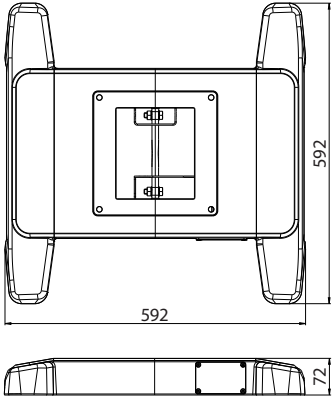
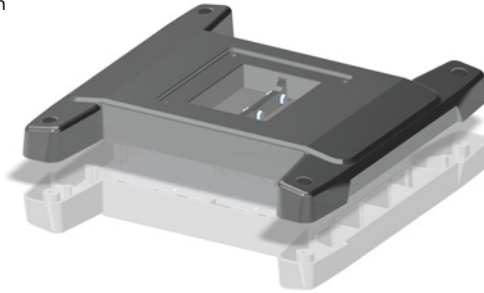
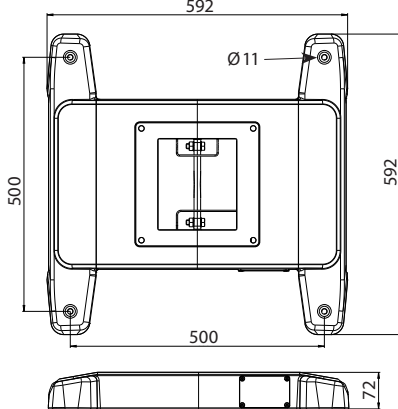


Additional weight

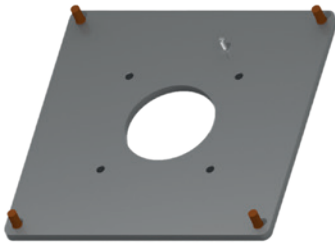
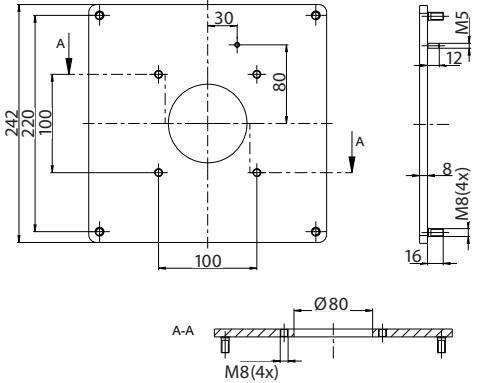
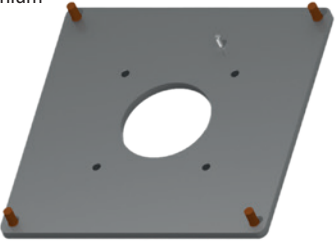
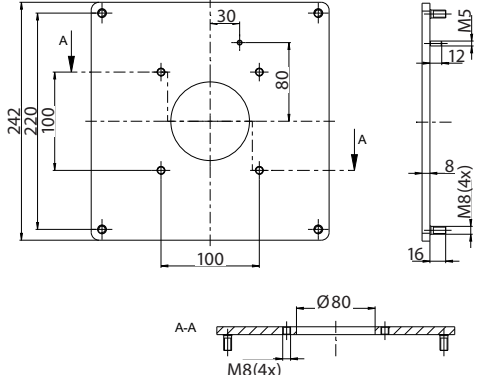


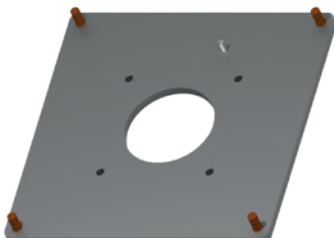
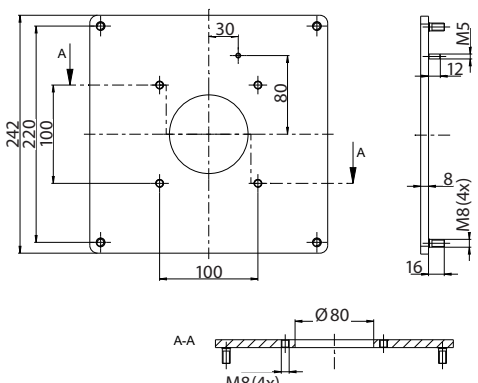
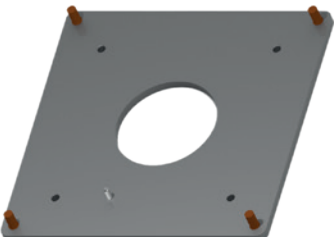
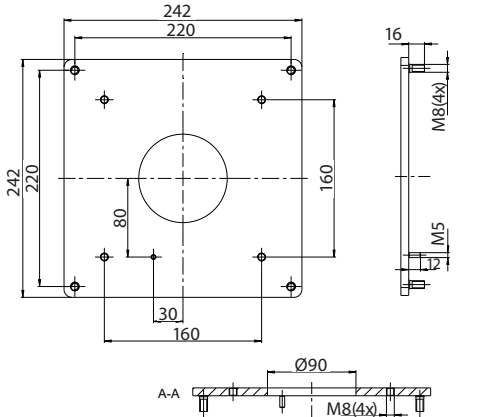
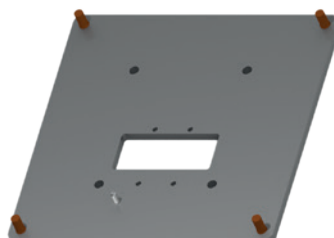
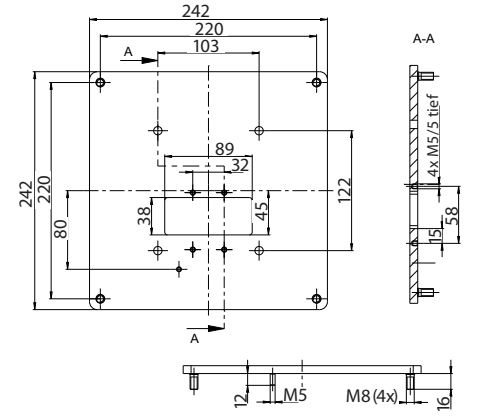
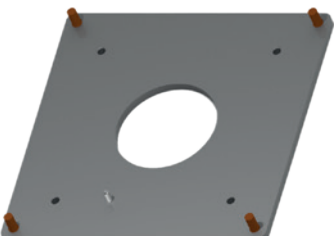
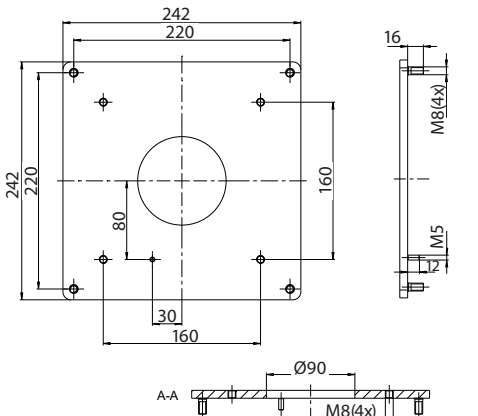
Ordering data

flex.base

Article	Figure	Dimension drawing (data in mm)
flex.base stand base 1016552200 RAL 9006 white-aluminium <ul style="list-style-type: none"> Material: die-cast aluminium Weight: 11.1 kg 		
flex.base stand base for floor mounting 1016562200 RAL 9006 white-aluminium <ul style="list-style-type: none"> Material: die-cast aluminium Weight: 11.1 kg 		

flex.base Accessories

Adapter plate for CS-480 B.flex stand base, fixed 9806000101 RAL 9006 white-aluminium <ul style="list-style-type: none"> Material: powdered steel Weight: 3.6 kg 		
Adapter plate for CS-3000 neXt stand base 9806000101 RAL 9006 white-aluminium <ul style="list-style-type: none"> Material: powdered steel Weight: 3.6 kg 		

Article	Figure	Dimension drawing (data in mm)
Adapter plate for CS-3000 stand base 9806000101 RAL 9006 white-aluminium <ul style="list-style-type: none"> Material: powdered steel Weight: 3.6 kg 		
Adapter plate for CS-4000 neXt stand base, fixed 9806000098 RAL 9006 white-aluminium <ul style="list-style-type: none"> Material: powdered steel Weight: 3.6 kg 		
Adapter plate for CS-4000 neXt Column profile 9806000099 RAL 9006 white-aluminium <ul style="list-style-type: none"> Material: powdered steel Weight: 3.6 kg 		
Adapter plate for CS-2000 System 80 Supporting column 9806000098 RAL 9006 white-aluminium <ul style="list-style-type: none"> Material: powdered steel Weight: 3.6 kg 		

Ordering data

flexbase Accessories

Article	Figure	Dimension drawing (data in mm)
<p>Adapter plate for CS-2000 system 60 stand base</p> <p>9806000118 RAL 9006 white-aluminium</p> <ul style="list-style-type: none"> Material: powdered steel Weight: 3.6 kg 		
<p>Adapter plate for CS-2000 SL 45/60 stand base</p> <p>9806000119 RAL 9006 white-aluminium</p> <ul style="list-style-type: none"> Material: powdered steel Weight: 3.6 kg 		
<p>Adapter plate for CS-2000 system 80 stand base</p> <p>9806000120 RAL 9006 white-aluminium</p> <ul style="list-style-type: none"> Material: powdered steel Weight: 3.6 kg 		

Article
Figure
Castor set (4 pieces industrial rolls)
9808012800

- Rolls Ø 75 mm
- Load capacity per roll: 50 kg
- Incl. assembly material and instructions


Castor set (4 pieces apparatus rolls)
9808015300

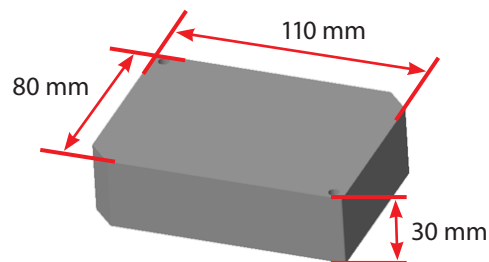
- Rolls Ø 75 mm
- Load capacity per roll: 70 kg
- Incl. assembly material and instructions


Adjustable feet set (4 pieces)
9808012900

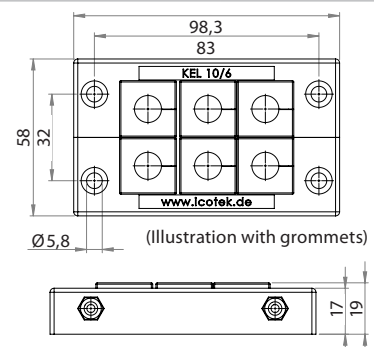
- Height adjustable
- Adjustable overall height: 35–45 mm
- Incl. assembly material and instructions
- Load capacity per adjustable foot: 50 kg


flex.base additional weight
9806000145 RAL 9006 white-aluminium

- Material: steel
- Self-forming screws included
- Weight: 2 kg

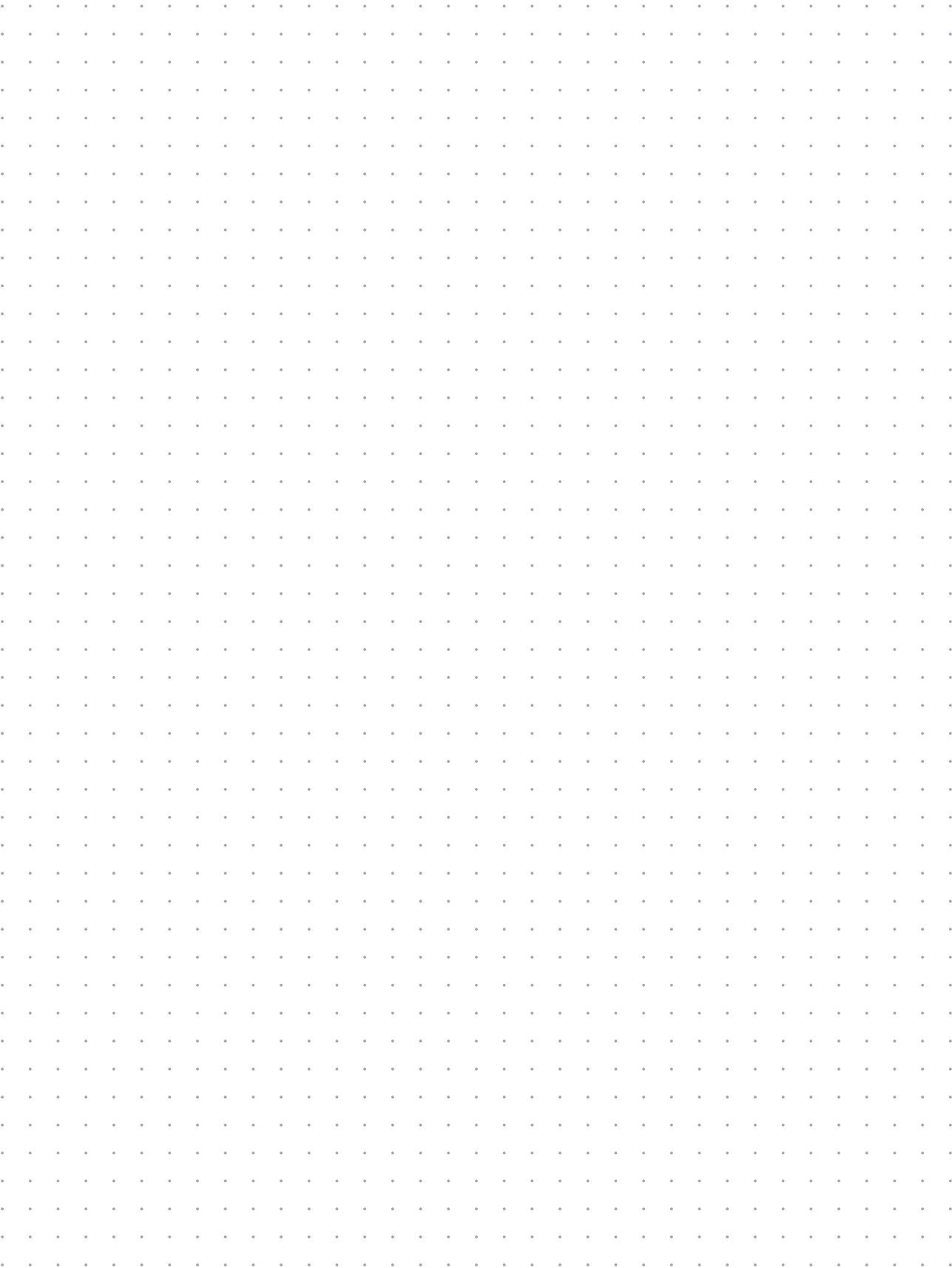

**flex.base Interface plate
Icotek KEL 10 (without grommets)**
9806000153

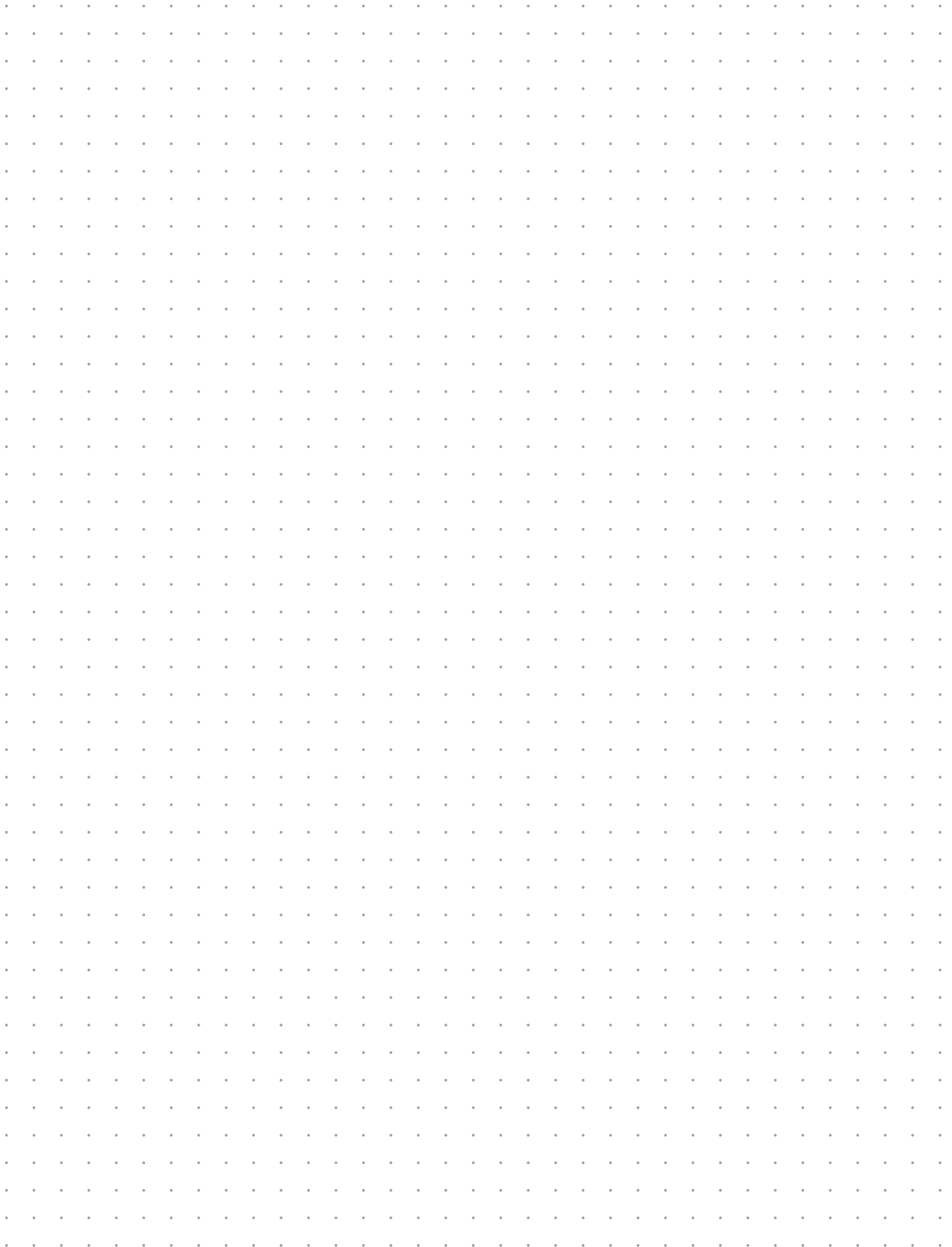
- Material: plastic



Notes

Diagrams. Sketches. Ideas.







**We make
safety happen.**



**We keep safe
your visions.**

700 0000 000 · 05.2020 · Subject to alterations.

Contact

International Headquarters BERNSTEIN AG

Hans-Bernstein-Str. 1
D-32457 Porta Westfalica
Phone +49 571 793-0
Fax +49 571 793-555
info@de.bernstein.eu
www.bernstein.eu

Denmark

BERNSTEIN A/S
Phone +45 7020 0522
Fax +45 7020 0177
info@dk.bernstein.eu

France

BERNSTEIN S.A.R.L.
Phone +33 1 64 66 32 50
Fax +33 1 64 66 10 02
info@fr.bernstein.eu

Italy

BERNSTEIN S.r.l.
Phone +39 035 4549037
Fax +39 035 4549647
info@it.bernstein.eu

United Kingdom

BERNSTEIN Ltd
Phone +44 1922 744999
Fax +44 1922 457555
info@uk.bernstein.eu

Austria

BERNSTEIN GmbH
Phone +43 2256 62070-0
Fax +43 2256 62618
info@at.bernstein.eu

Switzerland

BERNSTEIN (Schweiz) AG
Phone +41 44 775 71-71
Fax +41 44 775 71-72
info@ch.bernstein.eu

Hungary

BERNSTEIN Kft.
Phone +36 1 4342295
Fax +36 1 4342299
info@hu.bernstein.eu

China

**BERNSTEIN Safe Solutions
(Taicang) Co., Ltd.**
Phone +86 512 81608180
Fax +86 512 81608181
info@bernstein-safesolutions.cn

www.bernstein.eu