

## **Think different! Our after-sale follow-up makes the difference.**

---

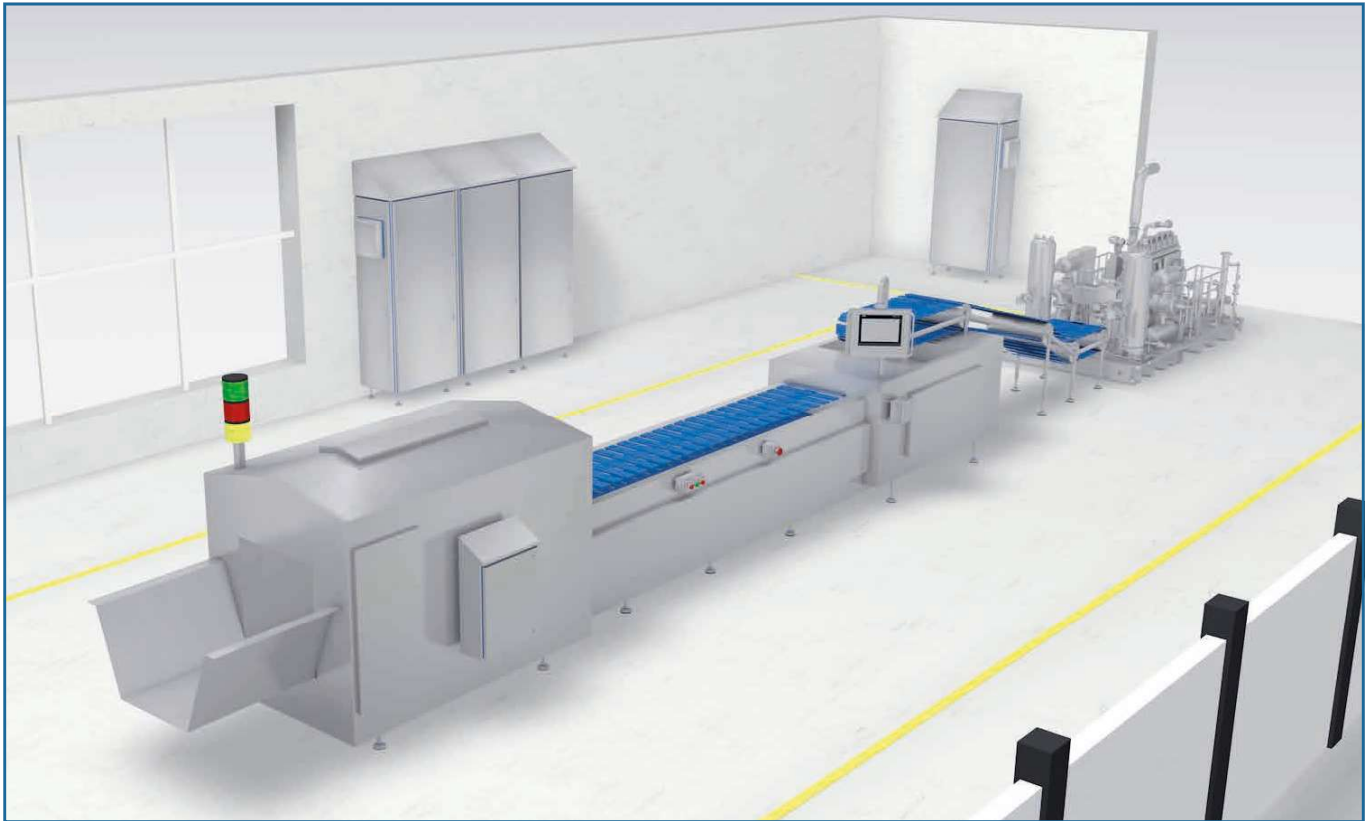
**Advice before, during and after purchase.  
For all your requirements, Ilinox is there.**

Through our agents present all over the national territory and the companies represented in the major European towns, inhouse trained skilled personnel, on call every day, to ensure you an accurate pre-sale advice and a timely solution to any problems. Each technician is a great expert of our products.

PRODUCT	PAG.
<b>HYGIENIC DESIGN LINE</b>	
Small Cabinets QSH	144
Junction boxes DEH and pushbutton boards PEH	146
Control box BKH	148
Cabinets CXH	150
Accessories for Hygienic Design Line	152

7

**HYGIENIC DESIGN LINE**



It is commonly thought that everything to do with the pharmaceutical and food sector is something we can undoubtedly be absolutely sure about and that foodstuffs, not to mention pharmaceuticals, are produced and treated according to levels of “**Superior Quality**”, so as to guarantee to consumers that the places and equipment involved in the production chain have been engineered in an optimal manner for their intended use and that all necessary measures have been taken in order to guarantee the safety and wholesomeness of the food products.

We would also like to believe that the work of each individual worker, whatever his or her position, is carried out in the awareness of those human and professional ethics that should be applied by all those who are responsible for the safeguarding of our wellbeing and health.

This is what we would like to believe and what we expect both for ourselves and for future generations.

It is clear to all of us that the fundamental aim is the **prevention of microbial contamination of food products**.

Such contamination may originate from raw materials, but a product could also be contaminated by micro-organisms during processing and packaging. If the design characteristics of the machinery are inadequate, this makes for difficulty in cleaning in-between slots and cracks where residues may be trapped, thus enabling micro-organisms to survive and proliferate leading to potential cross-contaminations of subsequent product batches.

**Cleaning is thus a question of great importance.** Machinery that is difficult to clean will require more rigorous procedures, the use of more aggressive chemicals, and extended cleaning and decontamination cycles. This all entails higher costs, lower production and a shorter life for the machinery.

One of the materials most commonly utilised in the manufacture of machinery for the food industry is stainless steel, which offers excellent protection against corrosion, total lack of toxicity, resistance to both low and high temperatures, good workability and lifetime.

The series 300 austenite steels, such as TYPE 304 - DIN 1.4301, TYPE 304L – DIN 1.4307 and TYPE 316L – DIN 1.4404, provide an excellent guarantee in most applications.

**Surface finishings are just as important.** The smoother the surface, the lower the risks of clinging dirt and hence the easier it is to clean.



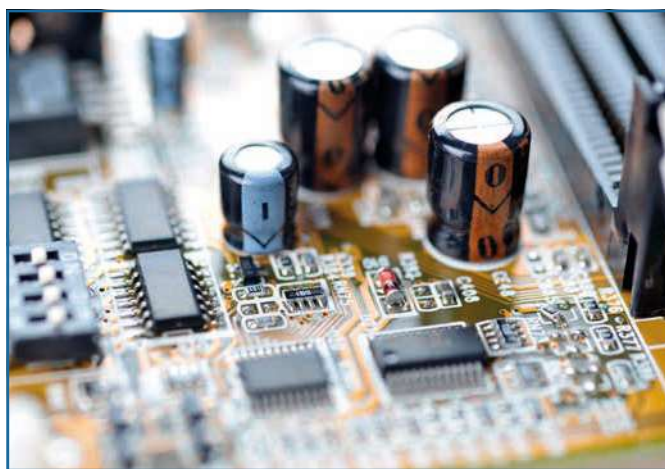
Also of fundamental importance is the use of Polymeric and/or Elastomer materials having specific properties of resistance to chemicals, operating temperatures, steam, mechanical stress, and hydrophobicity, cleanability and resistance to abrasion, to name but a few of the stringent characteristics required for use in food and pharmaceutical environments.

For its products Ilinox utilises silicone rubber, which is suitable for applications up to 180°C. To this end, machines are designed, manufactured and installed in accordance with criteria of absolute hygiene so as to avoid negative effects on the quality of foodstuffs or pharmaceuticals, following guidelines giving fundamental indications as to how to tackle the above mentioned problems.

First and foremost among these are the **EHEDG Guidelines (European Hygienic Engineering & Design Group)**, a Body composed of a panel of experts who work together to define the criteria for the sanitary planning of the machines, followed by the well known FDA (Food and Drugs Administration) Guidelines, and those of ASME BPE (Bio Processing Equipment), to name but a few of the most important and authoritative.

Improvisation and approximation have never led to satisfactory results; only those companies that are diligent and well prepared are suitable partners in your requirements of **“Superior Quality”**.

Ilinox has always been mindful of all these considerations, above all when the interests of everyone are at stake and when your expectations of quality do not allow you to accept any compromise whatsoever.





## REMOVABLE GASKET



The gasket, made of blue silicon to point out filth, can be removed and sanitized.

## NO GAPS



Door protection roof, with flush gasket, rounded corners, no gaps.

## SLOPING ROOF



Built-in roof, 30° slope, to prevent build-up of filth and facilitate drainage of liquids.

## EASY CLEANING

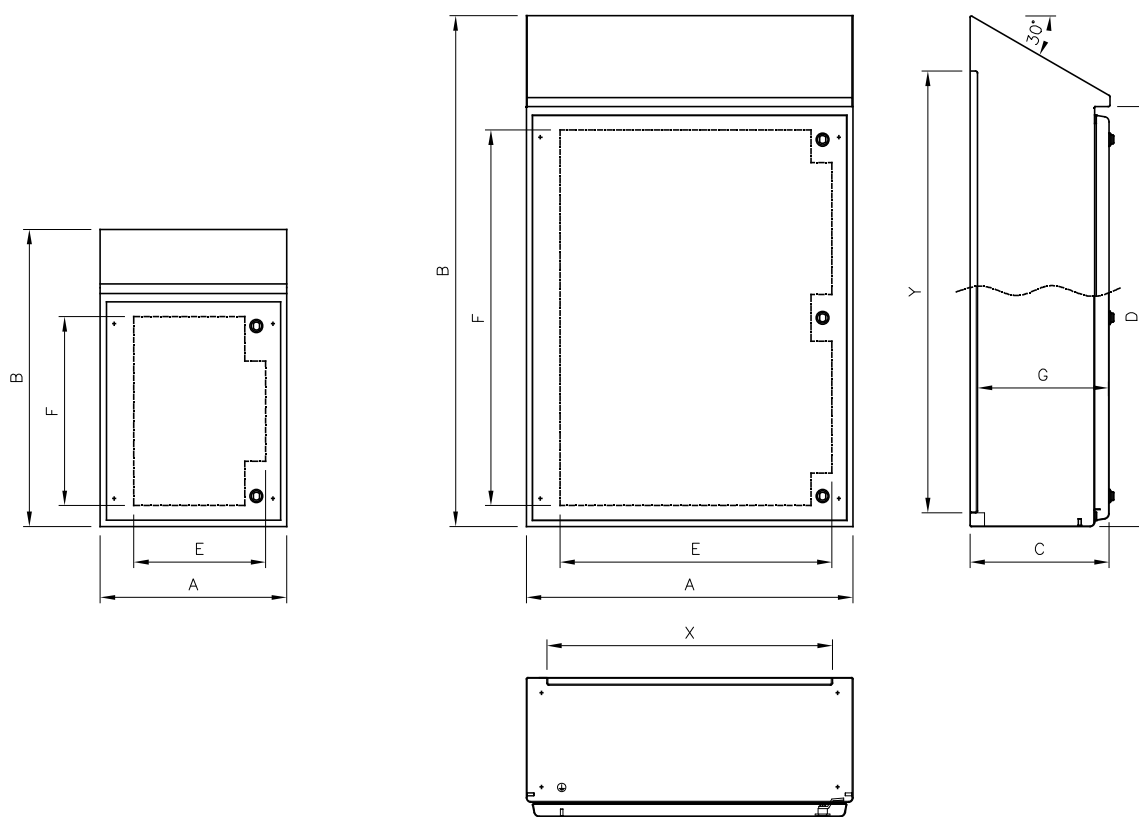


The distance between the sloping roof and the door does not create gaps while facilitating cleaning.

## SMALL CABINETS QSH

The small cabinets of the QSH Line meet the requirements for use in food, dairy, pharmaceutical industries as well as in all those environments where hygienic-sanitary regulations must absolutely be complied with (Directive on machinery 2006/42/EC DIN EN 1672-2-2005, Documents EHEDG 8 E 13).

- Material: EN 1.4307 (TYPE 304L) or, on request, EN 1.4404 (TYPE 316L) finely satin-finish.
- Enclosure obtained from a single sheet, shaped by multiple bending of the front edge; 30° slope roof to facilitate cleaning and liquid drainage.
- Full and Solid front door (max. weight admitted 12 kg).
- Roof shaped 30° slope to prevent filth build-up while facilitating the drainage of liquids and cleaning activities.
- Doorlock without recesses and/or gaps; outside surfaces made of EN 1.4404 (TYPE 316L), shaped as per sanitary regulations DIN EN 1672-2 and DIN EN 14159.
- Inner hinges: 120° opening according to CEI EN 60204-1 recommendation.
- Removable Gasket, made in a single piece molded light blue silicon, cleanable and sterilizable.
- Inner plate made of galvanized sheet sendzimir EN 10142 secured to the bottom of the enclosure by threaded pins M8 welded inside of the enclosure.
- Pre-arrangement for earthing in compliance with the applicable rules.
- Sendzimir inner plate to be ordered separately.
- Protection degree: IP66, IP69K.



**IK10 IP66 IP69K**

EN 60 529



**TYPE NEMA 4X, 12, 1, 4**

Standard UL508A - UL50  
Standard 250



EN 60204-1  
89/392/EEC

Low voltage directive 2014-35-UE

ITEM	OUTSIDE				MATERIAL	THICKNESS		INNER PLATE		AVAILABILITY
	L	h DOOR	H	P		ENCLOSURE	DOOR	X	Y	
QSH45A/304L	400	500	637	200	TYPE 304L	15/10	15/10	312	550	YES
QSH55A/304L	500	500	637	200	TYPE 304L	15/10	15/10	412	550	YES
QSH66A/304L	600	600	737	200	TYPE 304L	15/10	15/10	512	650	YES
QSH67A/304L	600	750	916	250	TYPE 304L	15/10	15/10	512	800	YES
QSH79A/304L	700	900	1095	300	TYPE 304L	15/10	15/10	612	950	YES
QSH88A/304L	800	800	990	300	TYPE 304L	15/10	15/10	712	850	YES
QSH612A/304L	600	1200	1390	300	TYPE 304L	15/10	15/10	512	1250	YES
QSH616A/304L	600	1600	1845	380	TYPE 304L	15/10	15/10	512	1650	on demand
QSH812A/304L	800	1200	1390	300	TYPE 304L	15/10	15/10	712	1250	YES
QSH816A/304L	800	1600	1845	380	TYPE 304L	15/10	15/10	712	1650	on demand
QSH45A/316L	400	500	637	200	TYPE 316L	15/10	15/10	312	550	on demand
QSH55A/316L	500	500	637	200	TYPE 316L	15/10	15/10	412	550	on demand
QSH66A/316L	600	600	737	200	TYPE 316L	15/10	15/10	512	650	on demand
QSH67A/316L	600	750	916	250	TYPE 316L	15/10	15/10	512	800	on demand
QSH79A/316L	700	900	1095	300	TYPE 316L	15/10	15/10	612	950	on demand
QSH88A/316L	800	800	990	300	TYPE 316L	15/10	15/10	712	850	on demand
QSH612A/316L	600	1200	1390	300	TYPE 316L	15/10	15/10	512	1250	on demand
QSH616A/316L	600	1600	1845	380	TYPE 316L	15/10	15/10	512	1650	on demand
QSH812A/316L	800	1200	1290	300	TYPE 316L	15/10	15/10	712	1250	on demand
QSH816A/316L	800	1600	1845	380	TYPE 316L	15/10	15/10	712	1650	on demand

UL certification to be requested with the order



Customized convex blind nut with under head special design for anti-loss purpose equipped with gasket. Threaded path length foreseen for guarantee a certain mechanical stop, to avoid excessive gasket compression.



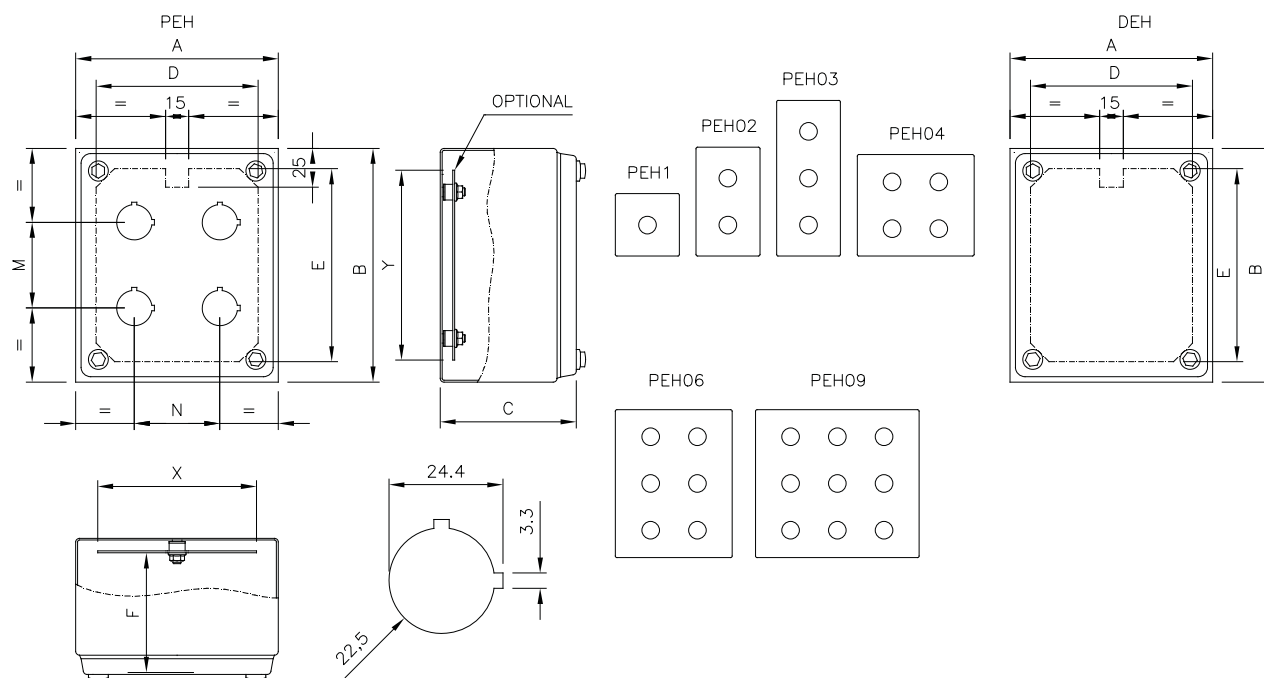
The gasket, made of blue silicon to point out filth, can be removed and sanitized. Calibrated softness kept in place by the special screw.





The case can be used both for the industrial PE/DE line as per PEH/DEH hygienic line.

### PUSH-BUTTONS “PEH” AND JUNCTION BOXES “DEH”

- Material: EN 1.4404 (TYPE 316L) finely satin-finished, thickness 12/10 for main body and door. On demand different types of s/s can be supplied.
- The cover is secured by screws provided with sealing and leak-proof washers.
- Removable Gasket, made in a single piece molded light blue silicon, cleanable and sterilizable.
- Pre-arrangement for earthing in compliance with the applicable rules.
- All boxes are complete of stud bolts to secure the DIN bar, if any.
- The PEH Series features drilled cover to accommodate the Ø 22,5 standardized push-button panel.
- Inner plate in sendzimir execution, available on demand (NOT for model DEH01, PEH01).
- Protection degree: IP66, IP69K.



**PEH** IK07 IP66 IP69K EN 60 529  **TYPE NEMA** 4X, 12, 1, 4 Standard UL508A - UL50 Standard 250  EN 60204-1 89/392/EEC Low voltage directive 2014-35-UE

ITEM	OUTSIDE SIZES			DOOR USEFUL SIZE			CENTRE DISTANCE		MATERIALS			INNER PLATE		
	A	B	C	D	E	F	M	N	GASKET	TYPE	THICKNESS	ITEM	X	Y
PEH01/316A	90	90	85	64	64	-	-	-	Silicone stampato	Type 316L	1,2 mm	-	-	-
PEH02/316A	90	140	85	64	114	74	55	-	Silicone stampato	Type 316L	1,2 mm	PI02A	62	112
PEH03/316A	90	200	85	64	174	74	55	-	Silicone stampato	Type 316L	1,2 mm	PI03A	62	172
PEH04/316A	130	150	85	104	124	74	55	55	Silicone stampato	Type 316L	1,2 mm	PI04A	102	122
PEH06/316A	190	150	100	164	124	89	55	55	Silicone stampato	Type 316L	1,2 mm	PI06A	162	122
PEH09/316A	210	190	100	184	164	89	55	55	Silicone stampato	Type 316L	1,2 mm	PI09A	182	162

**DEH** IK07 IP66 IP69K EN 60 529  **TYPE NEMA** 4X, 12, 1, 4 Standard UL508A - UL50 Standard 250  EN 60204-1 89/392/EEC Low voltage directive 2014-35-UE

ITEM	OUTSIDE SIZES			DOOR USEFUL SIZE			CENTRE DISTANCE		MATERIALS			INNER PLATE		
	A	B	C	D	E	F	M	N	GASKET	TYPE	THICKNESS	ITEM	X	Y
DEH01/316A	90	90	85	64	64	-	-	-	Silicone stampato	Type 316L	1,2 mm	-	-	-
DEH02/316A	90	140	85	64	114	74	55	-	Silicone stampato	Type 316L	1,2 mm	PI02A	62	112
DEH03/316A	90	200	85	64	174	74	55	-	Silicone stampato	Type 316L	1,2 mm	PI03A	62	172
DEH04/316A	130	150	85	104	124	74	55	55	Silicone stampato	Type 316L	1,2 mm	PI04A	102	122
DEH06/316A	190	150	100	164	124	89	55	55	Silicone stampato	Type 316L	1,2 mm	PI06A	162	122
DEH09/316A	210	190	100	184	164	89	55	55	Silicone stampato	Type 316L	1,2 mm	PI09A	182	162

UL certification to be requested with the order





Smooth rounded surfaces, designed for facilitate cleaning without grooves where filth might deposit and remain.



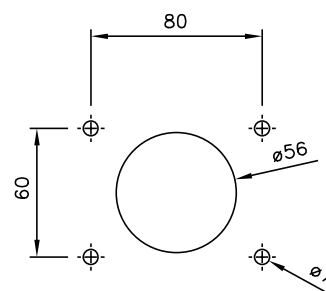
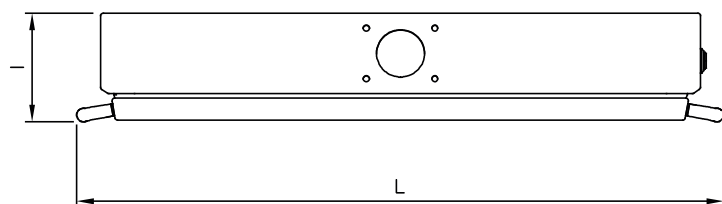
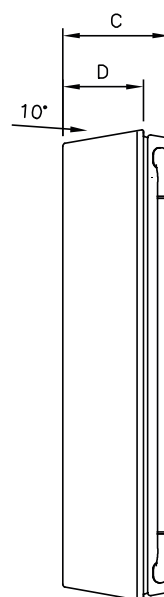
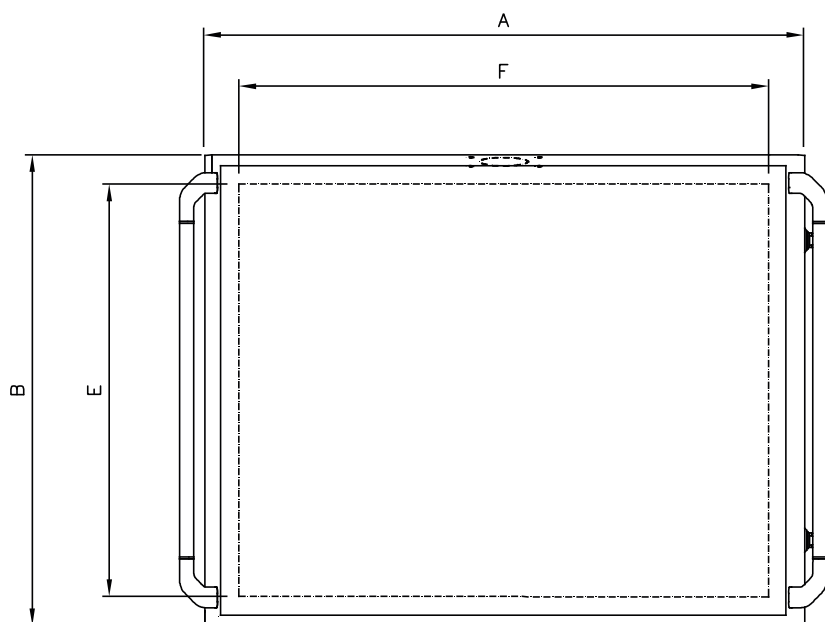
Smooth and finely satin round bended door complete of perimetral single piece silicon gasket.



The gasket, made of blue silicon to point out filth, can be removed and sanitized.

### CONTROL BOX HYGIENIC SERIES BKH

- EN 1.4307 (TYPE 304L) s/s execution, finely satin-finished and protected.
- Enclosure obtained from a single sheet, thickness 15/10 shaped.
- Enclosures drilled for the assembling of articulated arms type TJ-TS-TL with rotary joint code GKSHA.
- 10° slope roof to facilitate cleaning and liquid drainage.
- Full door, hinged, side lock to take maximum advantage of the drilling space.
- Inner plate not provided.
- Ergonomic grip handles, TYPE 304 s/s.
- Inner hinges, s/s: 100° opening as per CEI EN 60204-1 recommendations.
- Seal removable, cleanable and sterilizable, made of moulded silicone.
- Prearranged for earthing according to the regulations in force.
- Protection degree IP66 and IP69K
- Doorlock without recesses and/or gaps; outside surfaces made of EN 1.4404 (TYPE 316L) s/s, shaped as per sanitary regulations DIN EN 1672-2 and DIN EN 14159; opening by removable key, zama execution.
- Box compatible with joint GKSHA.



**IK10 IP66 IP69K**

EN 60 529



**TYPE NEMA 4X, 12, 1, 4**

Standard UL508A - UL50  
Standard 250



EN 60204-1  
89/392/EEC

Low voltage directive 2014-35-UE

ITEM	OUTSIDE SIZES			USEFUL SURFACE			OVERALL DIM. WITH HANDLES	
	A	B	C	D	E	F	I	L
BKH43A/304L	450	350	125	94	281	368	127	505
BKH54A/304L	550	450	125	94	381	468	127	605
BKH65A/304L	600	500	125	94	431	518	127	655
BKH75A/304L	700	550	125	94	481	618	127	755

UL certification to be requested with the order



## REMOVABLE GASKET



The gasket, made of blue silicon to point out filth, can be removed and sanitized.

## NO GAPS



Door protection roof, with flush gasket, rounded corners, no gaps.

## SLOPING ROOF



Built-in roof, 30° slope, to prevent build-up of filth and facilitate drainage of liquids.

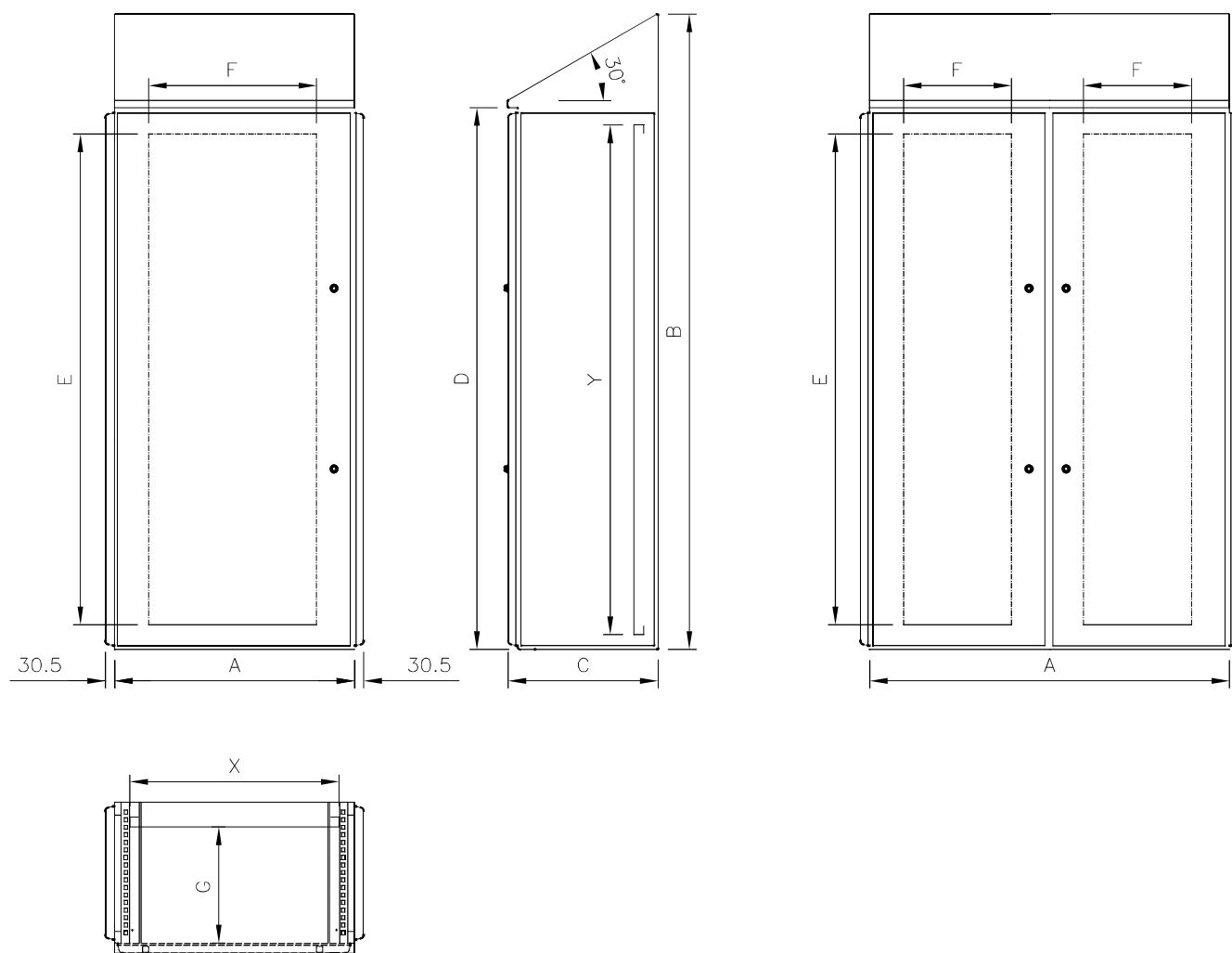
## EASY CLEANING




The distance between the sloping roof and the door does not create gaps while facilitating cleaning.

## MONOBLOC HYGIENIC CABINETS WITH REMOVABLE SIDE PANELS SERIES CXH

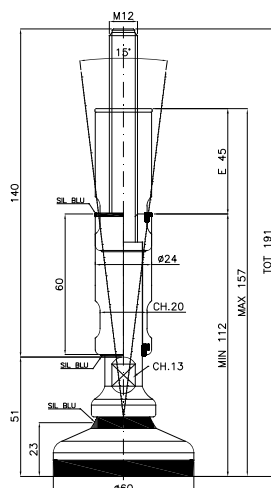
- Material: EN 1.4307 (TYPE 304L) s/s, finely satin-finished and protected, thickness: door 20/10, envelope and sides 15/10.
- Front door, full or with 3+3 laminate shatterproof glass, stiffening s/s inner frame, drilled to support equipment and/or secure cableways and accessories.\*The full door can also be equipped with partial windows and different materials can be used (polycarbonate or aluminium for silk printing) on demand.
- Rear side not accessible and ceiling not removable, 30° slope roof to prevent objects being put on it and to facilitate cleaning and liquid drainage.
- Side panels, bolted and removable, to be ordered separately (item: CXH85 )
- Doorlock without recesses and/or gaps; outside surfaces made of EN 1.4404 (TYPE 316L) s/s, shaped as per sanitary regulations DIN EN 1672-2 and DIN EN 14159; opening by removable key, zama execution.
- The cabinet bottom can be equipped with fairlead plates: enbloc, to be ordered separately.
- Seal removable, cleanable and sterilizable, made of moulded silicone.
- Sendzimir inner plate to be ordered separately.
- Slide guides item GSPH
- Intermediate plate for cabinets in series: PAH0117
- Pre-arranged for earthing as per regulations in force.
- Protection degree: IP66 and IP69K



**IK10 IP66 IP69K** EN 60 529  Low voltage directive 2014-35-UE

ITEM	OUTSIDE SIZES				DOOR USEFUL SIZE		USEFUL DEPTH	INNER PLATE		
	A	B	C	D	E	F	G	ITEM	X	Y
CXH0485A*	400	2111	500	1800	1630	160	385	-	-	-
CXH0685A	600	2111	500	1800	1630	360	385	PA0517	497	1692
CXH0885A	800	2111	500	1800	1630	560	385	PA0717	697	1692

\*Achievable on request



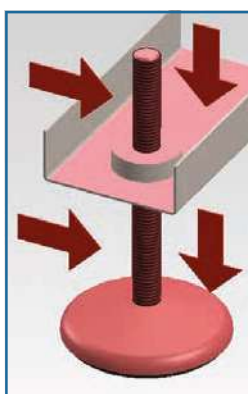
## FEET

Adjustable feet, simple and appealing design, certified and approved for use in food, dairy, pharmaceutical industries and in all those environments where compliance with hygienic-sanitary rules are a must. The seals guarantee tightness on all mobile surfaces; the ring nut acting as a lock-nut covers the threaded pin. The ground rest plate adhere perfectly, thus assuring stability with vibration proof effect thanks to the NBR rubber insert.

EN 1.4307 (TYPE 304L) polished s/s execution.

Our feet can make up for floor unevenness up to a 10° angle.

- Cod: **PSDXH27120/3A**



## SANITARY FOOT

Smooth surfaces, perfectly draining, no threads, sharp corners or gaps where filth could be trapped. Seals on all moving surfaces.

## TRADITIONAL FOOT

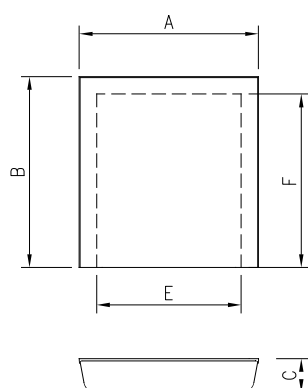
Unprotected threads, undercuts, sharp corners and level, not draining surfaces.



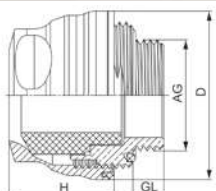
## STAINLESS STEEL LABYRINTH CASING HYGIENIC SERIES KLHD

Smooth rounded surfaces, they are designed to space the control board from the wall to facilitate clearing and avoid cavities where filth might deposit.

ARTICOLO	A	B	C	D	E
KLHD10	150	180	32	120	165
KLHD14	320	340	64	290	325



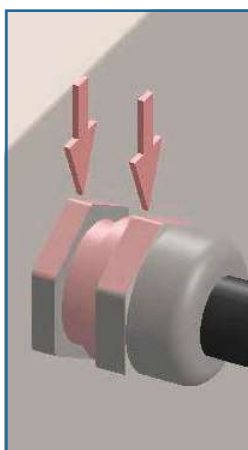
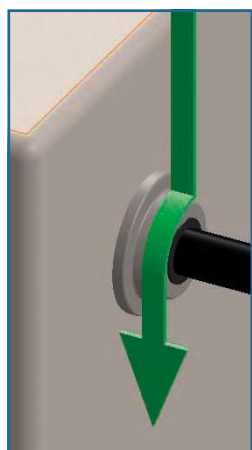




Advice:

- **EMC** connection integrated
- **VDMA** Riboflavin cleaning test passed
- **EHEDG** 01 cleaning test passed
- **EHEDG** certificate EL class I AUX approved

### IDEAL FOR HIGH-PRESSURE CLEANING



## CABLE GLANDS

Metric cable glands Series PH meet the requirements for use in food, dairy, pharmaceutical industries as well as in all those environments where compliance with hygienic-sanitary regulations is a must (Directive on machinery 2006/42/EC DIN EN 1672-2-2005, Documents EHEDG 8 E 13). This is possible thanks to the technical solutions adopted and to the design criteria: 25% sloping surfaces to avoid filth build-up; radial corners; no threads; gaps in contact with the outside; tamperproof for they cannot be opened from the outside. Delivered complete with OR, standard seal on the cable and ring nut.

EN 1.4307 (TYPE 304L) s/s execution, mirror finish; the EPDM seal is fit for use in the environments for which the cable gland has been designed: gaskets made from different materials can be supplied on request.

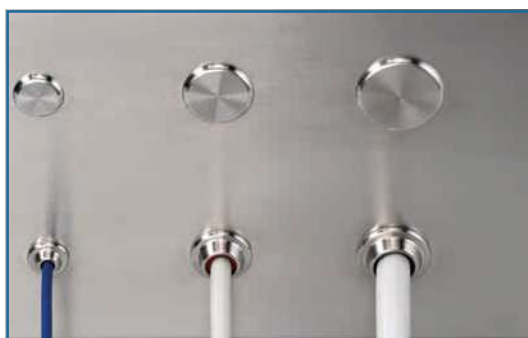
- Protection degree IP68 as per EN 60 529 and IP69K as per DIN 40 050-T9.
- Temperature range: -40°C + 180°C, intermittent up to 40°C approx.

### SANITARY CABLE GLAND

Smooth slanting surfaces, no threads in contact with the environment, radial corners.

### TRADITIONAL CABLE GLAND

Unprotected threads, sharp corners and level surfaces not draining.

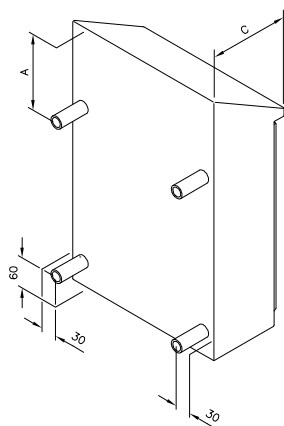


## CABLE GLANDS

ITEM	CLAMPING RANGE (MM)	AG	GL (MM)	D (MM)	SW (MM)	H (MM)
PH12050	5 – 6,5	M 12 x 1,5	6	21	14	19
PH16060	6 – 7,5	M 16 x 1,5	6	27	19 – 21	20
PH16075	7,5 – 10	M 16 x 1,5	6	27	19 – 21	20
PH20090	9 – 12	M 20 x 1,5	6	33	24 – 27	22,5
PH20110	11 – 13,5	M 20 x 1,5	6	33	24 – 27	22,5
PH25140	14 – 16	M 25 x 1,5	7	38	30	23,5
PH25150	15 – 18	M 25 x 1,5	7	38	30	23,5
PH32180	18 – 21	M 32 x 1,5	8	45	36	26,5
PH32210	21 – 25	M 32 x 1,5	8	45	36	26,5

## PLUGS

ITEM	ø	FOR DRILLS		FOR CABLE GLANDS
TP0716	20	6,5	÷ 16	M12 – M16
TP1624	28	16,5	÷ 24	M20
TP2431	35	24,5	÷ 31	M25
TP3140	45	31,5	÷ 40	M32 – M 40



## WALL MOUNTS

The wall mounts of the sanitary line have been designed to space the control board from the wall and prevent filth from building-up between the two elements, and to allow cleaning.

Cylindrical shape with no threads or gaps in contact with the environment; the threaded parts are protected by OR.

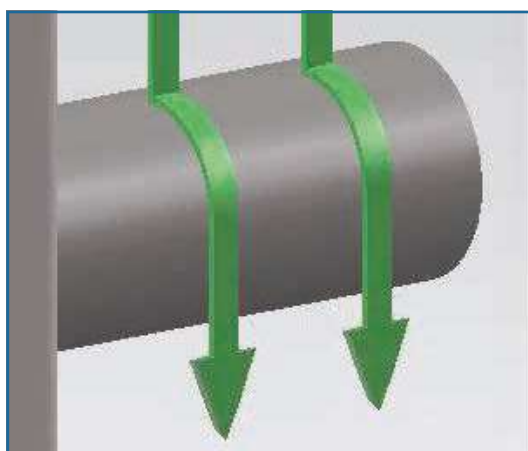
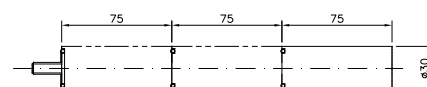
EN 1.4307 (TYPE 304L) s/s execution, satin finish, available with 75mm standard length, can be coupled to space the control board from the wall 75mm, 150mm and 225mm.

To avoid criticalities from an hygienic-sanitary point of view, the small cabinets of the QSH and QLSE line have no drilling; some blind holes are however present in the back wall, to identify the exact positions of the wall mount drills.

- **DIST75QSD** 4-pcs pack of wall mounts.

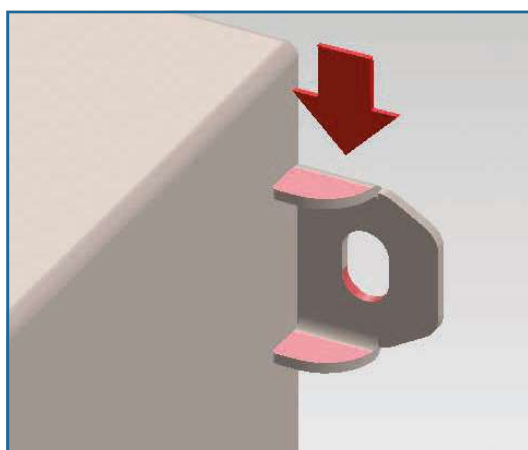


C DEPHT	A
180	187
200	198
250	227
300	256
320	267



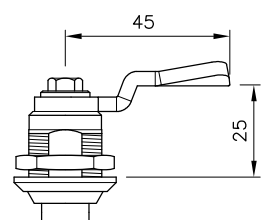
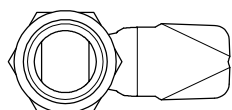
## SANITARY WALL MOUNT SYSTEM

Smooth rounded surfaces, they are designed to space the control board from the wall to facilitate clearing and avoid cavities where filth might deposit.



## TRADITIONAL WALL MOUNT SYSTEM

Designed to secure the control board close to a wall, filth can build up between the two elements. Level surfaces and undercuts.



## DOORLOCK

The Sanitary doorlocks are manufactured to comply with hygienic-sanitary regulations DIN EN 1672-2 and DIN EN 14159. No gap where filth might deposit in the part in contact with the environment; complete with seal to prevent cracking between the rotating bushing and the fixed body.

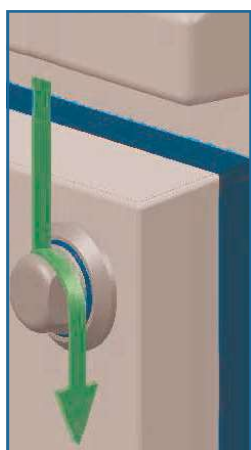
Opening and closing, on . turn, require an appropriate key or other suitable tool.

The body of the doorlock is made of EN 1.4571 (TYPE 316Ti) s/s, while the tongue inside the cabinet is made of galvanized steel (EN 1.4307 - Type 304L) s/s on request).

Protection degree IP69K as per DIN 40 050-T9.

Standard on the cabinets of the QSH line, they are optional on the cabinets of the QLSE line.

- **SG460-30-HD** – Sanitary doorlock for cabinets QL-QLSE
- **SG460-32-HD** – Sanitary doorlock for cabinets QSH
- **SG368-94** – Sanitary key



- **SANITARY DOORLOCK** – Smooth, perfectly draining surfaces, without gaps where filth might build-up. Seal to avoid gaps between bushing and body.
- **TRADITIONAL DOORLOCK** – Recessed cut for key entry, inside which filth can build-up.