

MP

Module plates

IP54 RoHS compliant Made in Germany

The module plates have cut-outs for fixing the KEL range cable entry systems KEL-FA 24, KEL 24, KEL-U 24, KEL-QUICK 24, KEL-JUMBO, KEL-DPF, KEL-JUMBO flex and KEL-ULTRA flex.

The module plates can be installed on:

- Separation walls by Rittal
- closed enclosure bases and roofs (various manufacturers)
- Bases of Lohmeier enclosures
- Bases of Rittal enclosures via KDR-BMP gland plates

The module blank plate without cut-outs (Order No. 43882) is designed for closing unused cut-outs. This module plate can even be used for self-made cut-outs.

Module plates are supplied with a gasket.

Specifications

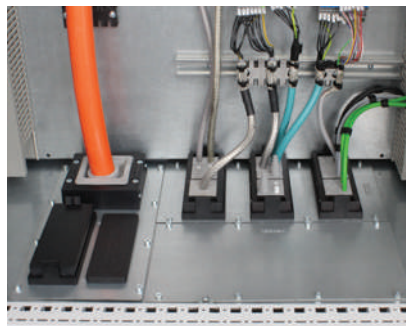
Material	Sheet steel, zinc-plated
	Aluminium (Order No. 43883, 43899)
Dimension	338 × 168 × 2 mm

Compatible with

KEL-FA 24 Cable entry frames	25
KEL 24 Cable entry frames	29
KEL-U 24 Cable entry frames	21
KEL-QUICK 24 Cable entry frames	106
KEL-SNAP snap frames	54 - 55
KEL-JUMBO Cable entry frames	56 - 57
KEL-DPF Cable entry grommets	182 - 183
KEL-JUMBO flex Cable entry ins.	185
KEL-ULTRA flex Cable entry ins.	184
KEL-DPR	160 - 161
Blank plates	330 - 332



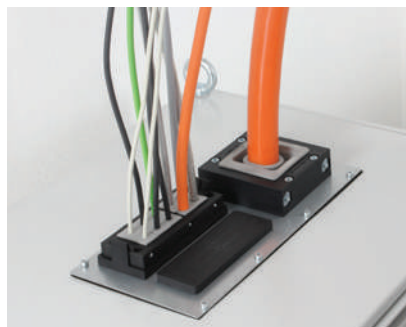
MP Applications



Cable routing via module plates in the base of a Rittal TS8 enclosure. Mounting with icotek gland plate KDR BMP.



Cable routing through the divider panel of a Rittal TS8 baying enclosure system via module plates.



Routing of several cables with and without connectors through a closed enclosure roof via module plates. Cut-out size 314 x 144 mm.



Routing of a rigid supply line through a closed enclosure roof via module plates. Cut-out size 314 x 144 mm.

