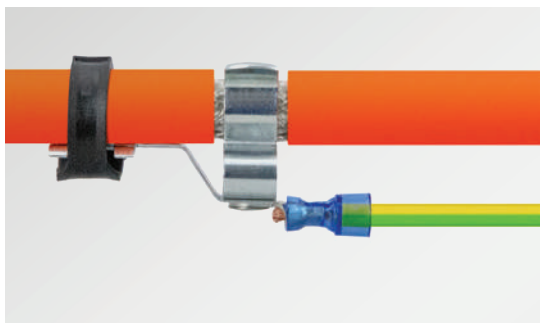


EMC shield clamps on cable lugs for assembly with rivets



Whenever a cable shielding is required with the possibility of grounding, EMC shield clamps can be used. Shield clamps are easy to use and effective in dissipating conducted disturbances.

Assembly

The shield clamps can be mounted using rivets.

Advantages & benefits

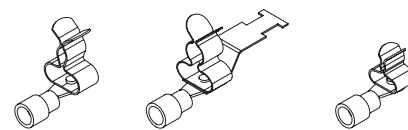
- Integrated strain relief function
- Large contact area
- Simple and tool-free mounting, easy assembly
- The spring design requires no adjustments and will permanently maintain contact to the cable shield
- Shock and vibration resistant, maintenance free
- Designed for high density applications

Specifications

Material

MSKL clamp, SK clamp
Cable lug

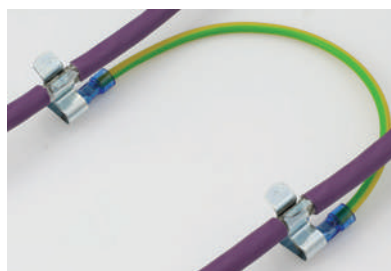
Spring steel, galvanised
UL listed



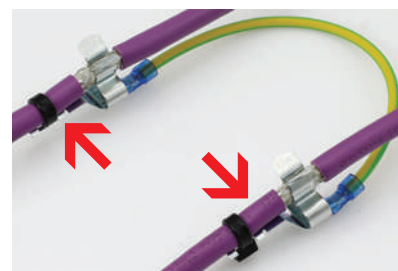
			RCL MSKL	RCLZ MSKL with cable fixation	RCL SKL
	Clamping range	RCL	Order No.	Order No.	Order No.
MSKL	3 – 12 mm	0.5 – 1.5 mm ²	36296.2	36301.2	–
	3 – 12 mm	1.0 – 2.5 mm ²	36297.2	36302.2	–
	3 – 12 mm	4 – 6 mm ²	36298.2	36303.2	–
SKL	1.5 – 3 mm	0.5 – 1.5 mm ²	–	–	36296.1
	1.5 – 3 mm	1.0 – 2.5 mm ²	–	–	36297.1
	1.5 – 3 mm	4 – 6 mm ²	–	–	36298.1
	3 – 6 mm	1.0 – 2.5 mm ²	–	–	36297.3
	6 – 8 mm	1.0 – 2.5 mm ²	–	–	36297.4
	8 – 11 mm	1.0 – 2.5 mm ²	–	–	36297.5
PU			25	25	25



Applications in which both cable shields must be brought to the same potential



Example for an application with
RCL|MSKL 3-12



Example for an application with
RCLZ|MSKL 3-12. The contacted electrical
cables are also fixed.