

Panel cut-out drawings

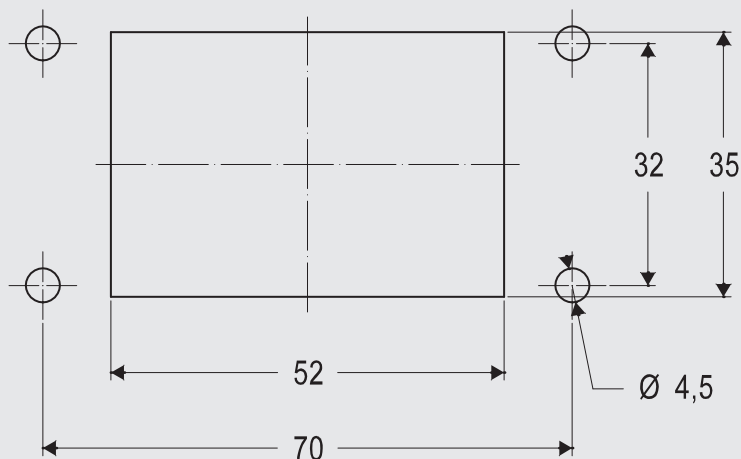
For V-TYPE series bulkhead mounting housings

To guarantee the declared IP degree of protection of the housings reported in this catalogue, according to EN IEC 60529 or to the relevant Type rating per ANSI/UL 50 and 50E (for those products bearing approval to those ratings), the surface of the mounting panel must meet the following requirements (definitions are provided in ISO 4287 standard):

Waviness $W_t \leq 0,2 \text{ mm}$ over a distance of 200 mm (measured on the panel without load)
Roughness $R_a \leq 16 \text{ }\mu\text{m}$

Scale 1:1

Size 44.27



Required screws: 4
Screws size: M4
Recommended torque:
 0,8 – 1,2 Nm / 7.1 – 10.6 lb.in

Size 57.27



Required screws: 4
Screws size: M4
Recommended torque:
 0,8 – 1,2 Nm / 7.1 – 10.6 lb.in

Notes: The values of tightening torque indicated above are just recommended values, that must be related – by the designer of the final application – to the resistance class of the screws (not included), with the assumption that the mounting panel is sufficiently rigid (stiff). If the deflection of the panel, under the effect of tightening the screws, is greater than 0,7 mm over a distance of 100 mm, it is necessary to use the counter-flanges mentioned in our catalogue or the special flange gaskets available upon request (please contact our Sales Department).

Accessories:



C7 .. FL
Counterflanges for V-TYPE IP67
bulkhead mounting housings
 Page G.45